



SOBHA ONE

SOBHA
REALTY



ONE

DIE REISE BEGINNT

ONE bringt dich
der Natur näher



Ein Ort, an dem Sie Tag für Tag
neu aufblühen



ONE

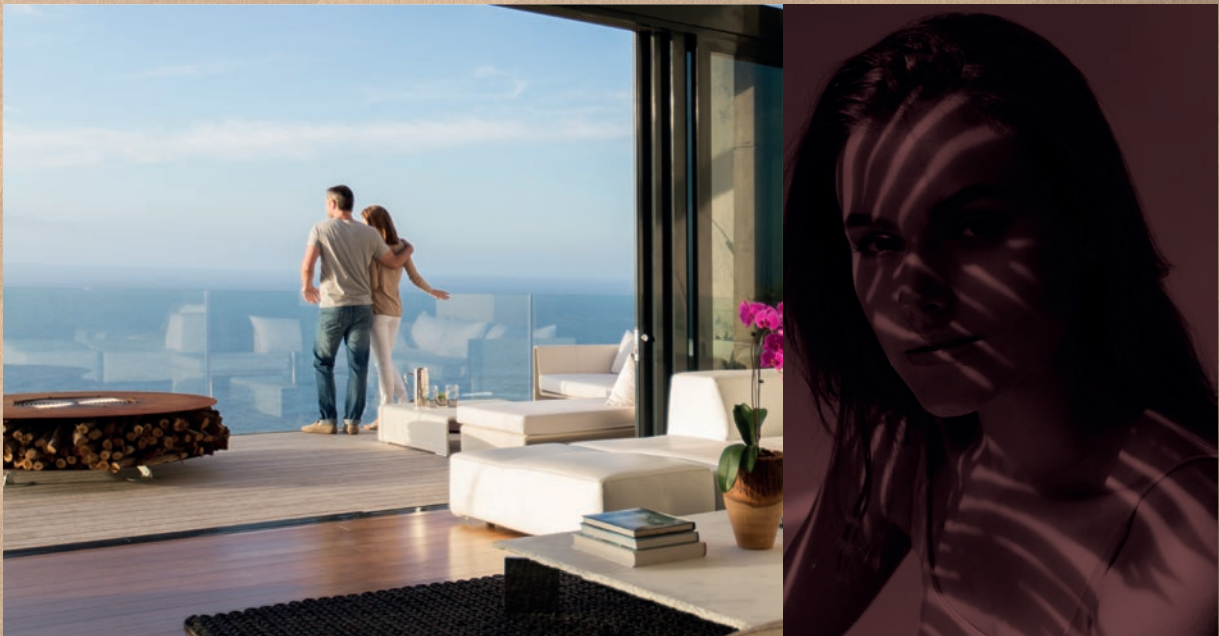
EINFACH SICH SELBST SEIN

Einzigartig, genau wie Sie



Ein Rückzugsort in unmittelbarer
Nähe zu allen Annehmlichkeiten

DIE KRAFT, DIE IM ONE LIEGT



*Wenn Vorstellungskraft auf Vision trifft,
ist ein stilvolles Leben das Ergebnis.*

Stadt und Natur sind im Einklang,
Arbeit und Freizeit kommen ins Gleichgewicht und vereinen sich

EIN WEG: IHR WEG

Die besten Orte in unmittelbarer Nähe

Sobha One ist eine kleine Oase der Geborgenheit in der Nähe der geschäftigen Ras Al Khor Road. Lassen Sie im Norden die friedvolle Aussicht auf den Dubai Creek auf sich wirken. Noch weiter nördlich erstreckt sich die Skyline mit einem Panoramablick auf den Burj Khalifa und den Creek Tower im Nordosten sowie die Dubaier Downtown im Westen.



VOLLER ANMUT ANKOMMEN UND WEGFAHREN

Sobha One liegt ganz in der Nähe von zwei neuen Autobahnkreuzen an der Ras Al Khor Road, sodass sich die Heimreise immer einfach und unkompliziert gestaltet. Mit einer Ausfahrt im Westen und im Osten und einer neuen U-Bahn-Linie hinter Sobha One in Planung sind Sie immer genau dort, wo Sie sein wollen.





LEBEN AM WASSER

Stellen Sie sich vor, wie es ist, jeden Morgen an den friedvollen Wassern der Stadt aufzuwachen. Die Sonne wird von der gekräuselten Oberfläche widergespiegelt und eine leichte Brise rauscht durch die Blätter der umstehenden Bäume.

Machen Sie einen gemütlichen Spaziergang oder genießen Sie den Ausblick auf das ruhige Wasser. Verbringen Sie entspannte Wochenenden am Meer und tanken Sie bei einem guten Buch etwas Sonne.



EINE PERSPEKTIVE IM ONE: IHRE PERSPEKTIVE

Vor Ihnen erstreckt sich eine atemberaubende Aussicht auf rund 140.000 m². Lassen Sie den Blick über die Golfrasen, das herrliche Wasser, den legendären Burj Khalifa und die geschäftige Downtown schweifen. Jeder Blickwinkel vermittelt eine andere Stimmung.



ONE

RAUM

Sobha One erstreckt sich über fünf miteinander verbundene Hochhäuser. Mit einer Höhe zwischen 30 und 65 Stockwerken fügen sie sich harmonisch in die beeindruckende Skyline ein.

In den Ein- bis Vierzimmer-Apartments und Maisonetten mit zwei bis vier Schlafzimmern eröffnet sich eine ganz neue Welt.



ONE FÜR ALLE, ALLE FÜR ONE



*Das Leben ist zu kurz, um sich mit weniger als dem
Allerbesten zufrieden zu geben. Bei Sobha One ist ein
luxuriöser Lebensstil vorprogrammiert.*

EIN STILVOLLER ABSCHLAG

Der erste Pitch-and-Putt-Platz in Dubai lockt mit 18 hochkarätigen und sorgfältig konzipierten Löchern.

Er bietet eine perfekte Möglichkeit, um sich nach einem langen Arbeitstag zu entspannen. Schließlich gibt es nichts Schöneres, als auf einem sonnigen Fairway einen langen Schlag einzulochen. Das Clubhaus verfügt über hochkarätige Annehmlichkeiten und einen Innenhof mit Blick auf den Golfplatz.



SPEISEN AM WASSER

Auf der Gastronomiepromenade, die das ruhige Wasser säumt, finden Sie kulinarische Genüsse für jeden Geschmack.

Tolle Restaurants bieten auf fast 500 Metern viele Optionen für ein intimes Abendessen, eine Tasse Kaffee mit Freunden oder ein stärkendes Mittagessen.



SKY GARDEN – EIN GARTEN IN LUFTIGEN HÖHEN

Genießen Sie den Blick auf die Sterne in luftigen Höhen, lassen Sie die atemberaubende Aussicht auf die Stadt auf sich wirken und bewundern Sie unvergessliche Sonnenauf- und -untergänge von der herrlichen Panoramaterrasse in jedem Hochhaus aus.



EIN INNENHOF FÜR ALLE SINNE



Alle fünf Hochhäuser von Sobha One sind über vier thematisch gestaltete Innenhöfe miteinander verbunden. Die sorgfältig begrünten Rückzugsorte für den privaten Gebrauch tragen zum allgemeinen Erscheinungsbild von Sobha One bei.

ENTSPANNEN

In unserer schnelllebigen Welt ist Entspannung wichtiger denn je. Spazieren Sie über die Allee, machen Sie etwas Yoga auf der Gemeinschaftsterrasse oder schlendern Sie durch die gepflegten Gärten. Stärken Sie sich anschließend bei einer Mahlzeit in den Grill- und Speisebereichen oder sehen Sie sich im hauseigenen Kino einen Film unter dem Sternenhimmel an. Hier gibt es das Richtige für jeden Geschmack und Anspruch.





UNVERGESSLICHE ERINNERUNGEN

Im Innenhof für Familien können Sie tolle Momente mit Ihren Liebsten verbringen. Genießen Sie das gute Wetter bei einem Picknick oder verschaffen Sie sich beim Plantschen mit Ihren Kindern eine willkommene Abkühlung. Kommen Sie vorbei und genießen Sie unvergessliche Momente mit Ihren Liebsten!





NEUE ENERGIE TANKEN

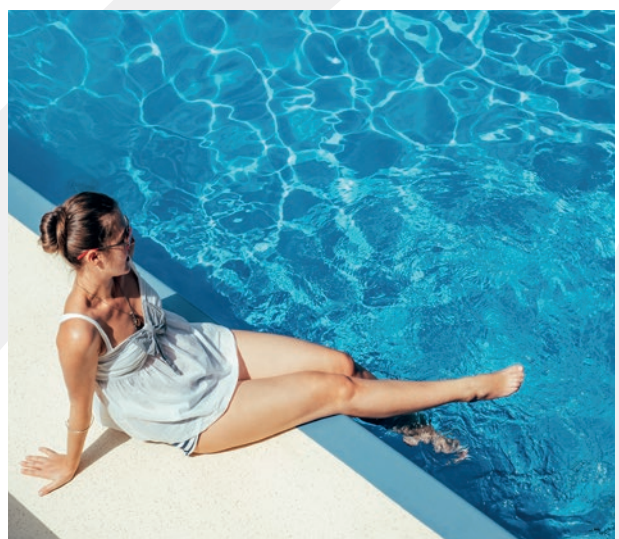
Wir glauben, das Fitness Spaß machen soll! Deshalb haben wir einen einzigartigen Innenhof eingerichtet, in dem wir die Vorzüge eines Fitnessstudios mit spannenden neuen Fitnessgeräten für den Innen- und Außenbereich kombiniert haben. Trainieren Sie mit Hometrainern, Laufbändern, im Zirkeltraining-Bereich und an den Seilen. Treiben Sie Ihren Puls in die Höhe und zeigen Sie sich von Ihrer besten Seite.





ERFRISCHEN

In diesem thematisch gestalteten Innenhof können Sie nach einem langen Tag genau das tun. Lassen Sie den Alltagsstress im Poolbereich hinter sich und fühlen Sie, wie Ihre Muskeln sich entspannen und Ihr Geist klar wird, während Sie Ihre Längen ziehen. Schließen Sie die Augen und lassen Sie die Seele baumeln, während Sie die warmen Sonnenstrahlen auf Ihrer Haut spüren.





SOBHA ONE



FLEXIBLE FINANZIERUNG

60%
in der Bauphase

40%
nach Abschluss
der Arbeiten

Große Ein- bis Vierzimmer-Apartments und Maisonettes mit zwei, drei oder vier Schlafzimmern

ONE

heißt Sie willkommen...

LAGEPLAN



Sheikh Zayed Road

Burj Khalifa & Downtown Dubai

Business Bay

The Dubai Mall

Dubai Canal

The Dubai Frame

Sobha Hartland und
zwei internationale Schulen

Dubai International Airport

Ras Al Khor Wildlife Sanctuary

Dubai Creek

SOBHA ONE

Golfplatz

Ras Al Khor Road



RAS AL KHOR
WILDLIFE SANCTUARY
05 MINUTEN



MEYDAN
RACE COURSE
10 MINUTEN



SOBHA HARTLAND UND
ZWEI INTERNATIONALE SCHULEN
10 MINUTEN



DUBAI INTERNATIONAL
AIRPORT
12 MINUTEN



BUSINESS BAY
12 MINUTEN



THE DUBAI MALL
15 MINUTEN



BURJ KHALIFA &
DOWNTOWN DUBAI
15 MINUTEN



DUBAI FRAME
15 MINUTEN

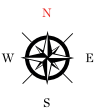


DUBAI OPERA
15 MINUTEN

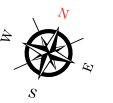
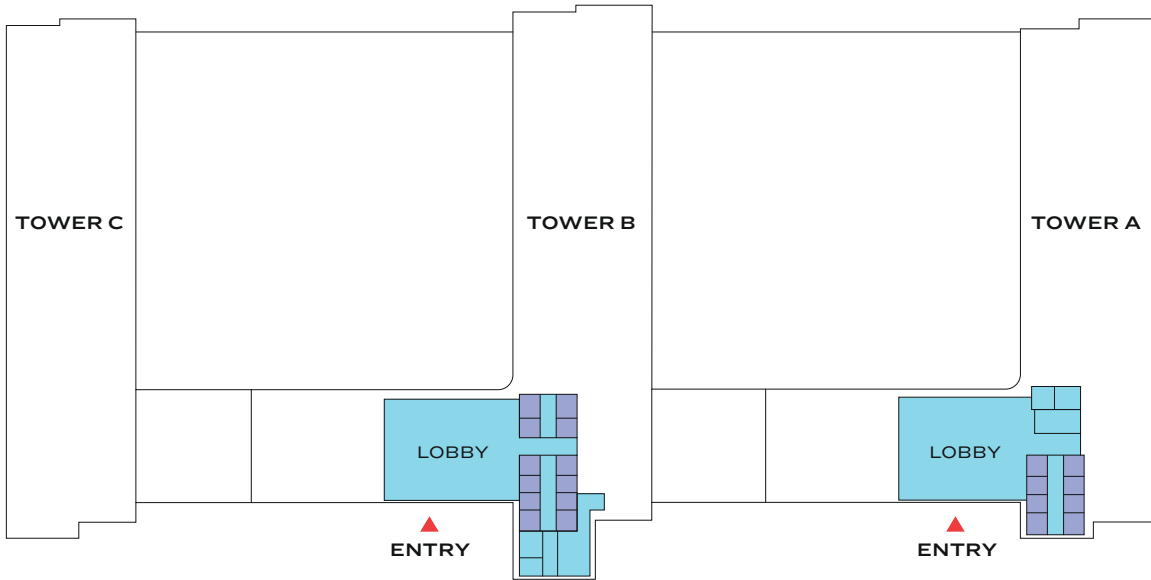


PALM JUMERIAH
25 MINUTEN

MASTER PLAN



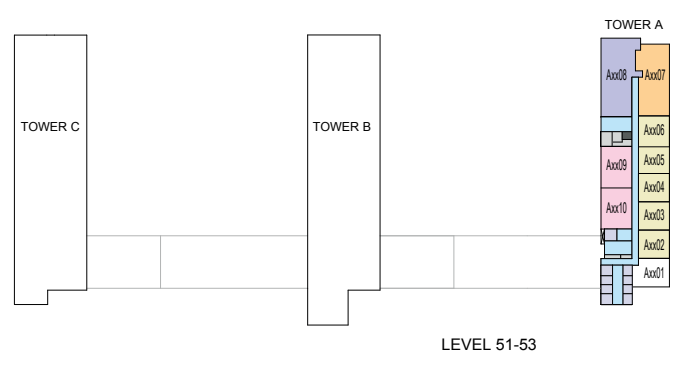
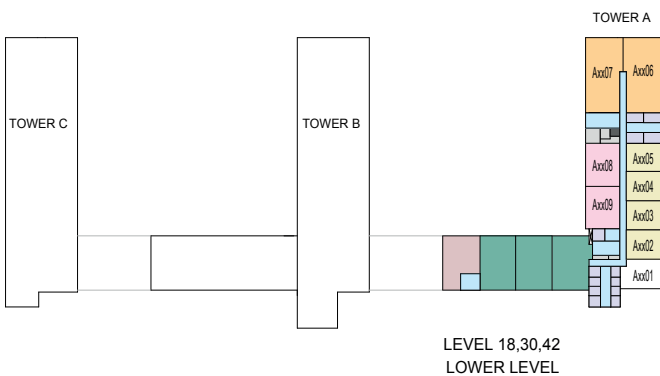
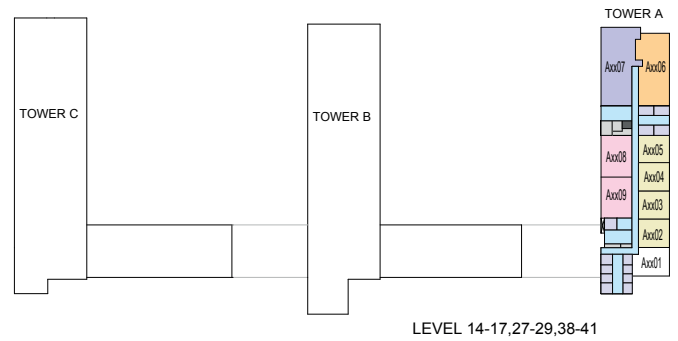
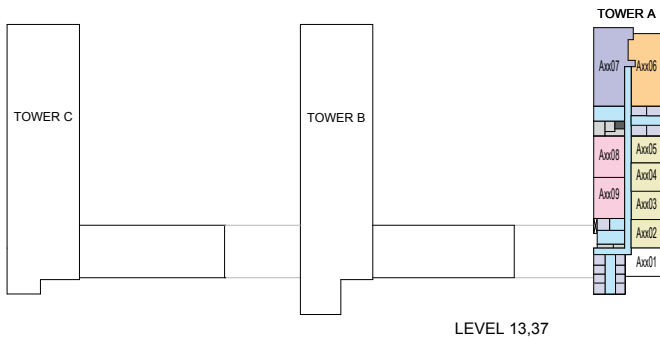
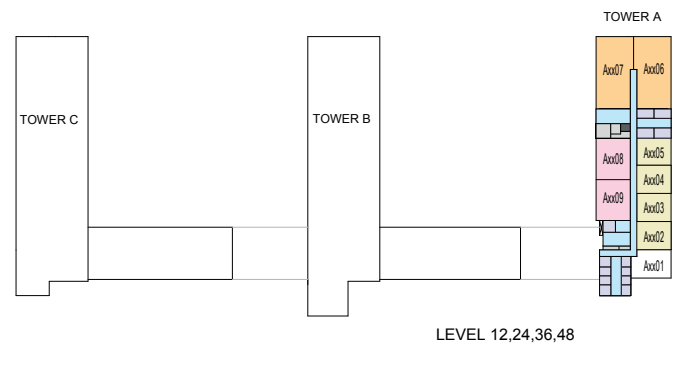
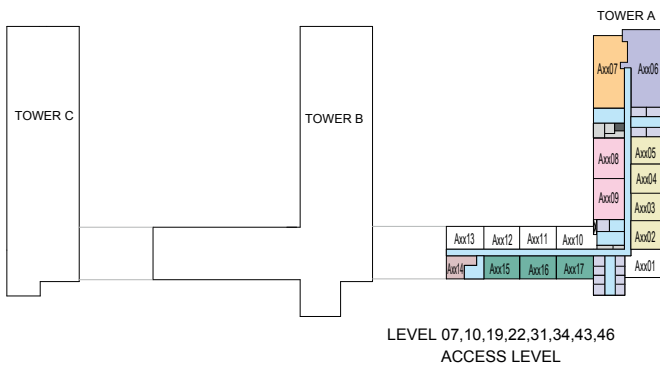
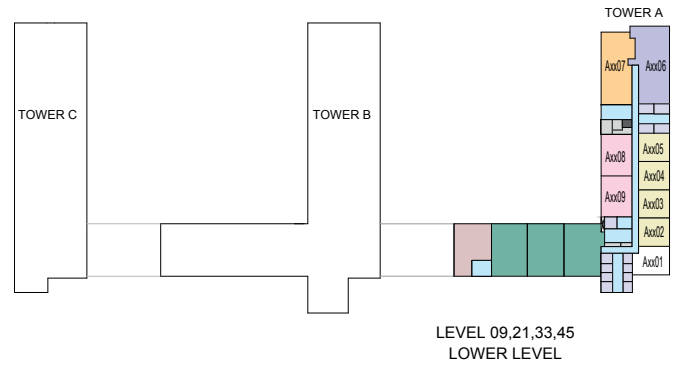
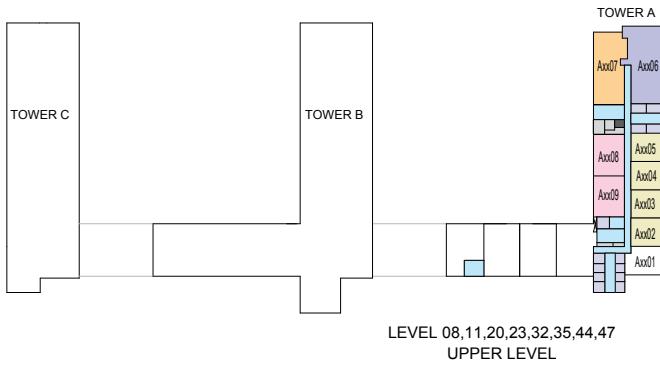
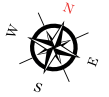
GROUND FLOOR



TOWER A
FLOOR PLAN LAYOUTS

FLOOR PLAN LAYOUT

TOWER A

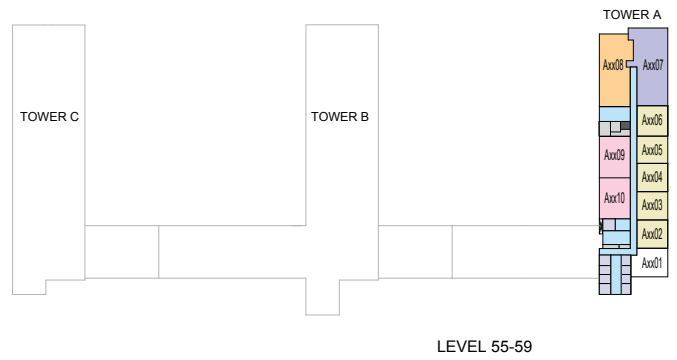
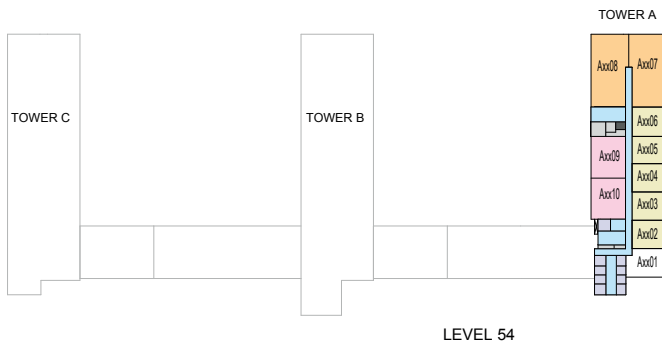


- 1 BED UNIT
- 3 BED UNIT
- 2 BED DUPLEX UNIT
- 4 BED DUPLEX UNIT
- LOBBIES, CORRIDORS & STAIRS
- LIFTS
- 2 BED UNIT
- 4 BED UNIT
- 3 BED DUPLEX UNIT
- SERVICES
- GARBAGE ROOM

Disclaimer: 1. All dimensions are in metric, measured to wall finishes. 2. All materials, dimensions & drawings are approximate. 3. Information is subject to change without notice, at developer's absolute discretion. 4. Actual area may vary from the stated area. 5. Drawing are not to scale. 6. All images used are for illustrative purpose only and do not represent the actual size, features, specifications, fittings and furnishings. 7. The developer reserves the right to make revisions/ alterations, at its absolute discretion, without any liability whatsoever.

FLOOR PLAN LAYOUT

TOWER A



- | | | | | | |
|---|---|--|--|--|---|
| 1 BED UNIT | 3 BED UNIT | 2 BED DUPLEX UNIT | 4 BED DUPLEX UNIT | LOBBIES, CORRIDORS & STAIRS | LIFTS |
| 2 BED UNIT | 4 BED UNIT | 3 BED DUPLEX UNIT | | SERVICES | GARBAGE ROOM |

Disclaimer: 1. All dimensions are in metric, measured to wall finishes. 2. All materials, dimensions & drawings are approximate. 3. Information is subject to change without notice, at developer's absolute discretion. 4. Actual area may vary from the stated area. 5. Drawing are not to scale. 6. All images used are for illustrative purpose only and do not represent the actual size, features, specifications, fittings and furnishings. 7. The developer reserves the right to make revisions/ alterations, at its absolute discretion, without any liability whatsoever.

TOWER A

UNIT PLAN LAYOUTS

1 BEDROOM APARTMENT

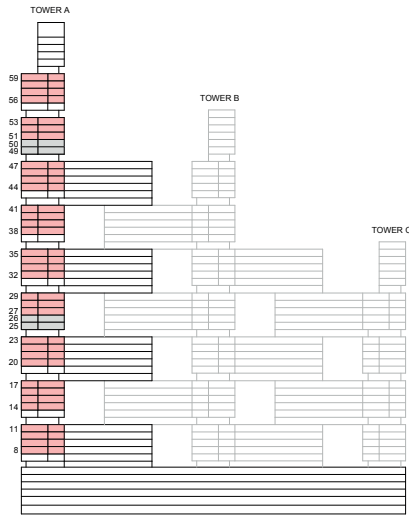
TYPE A (with powder room + balcony)

TOTAL SALEABLE AREA

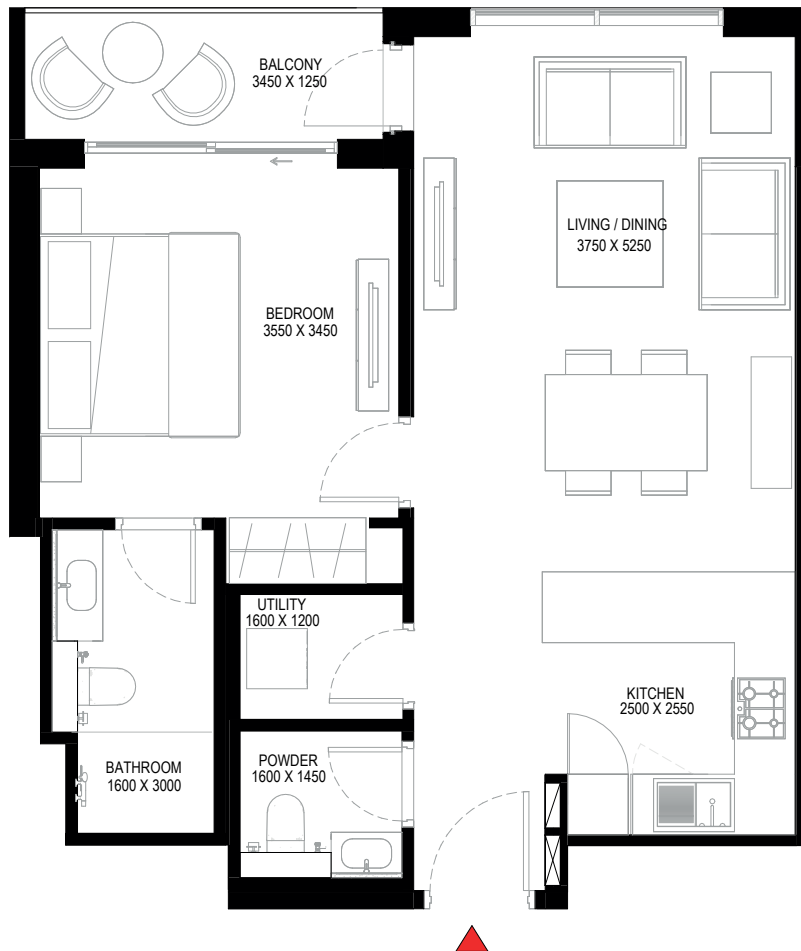
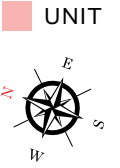
SUITE = 674.79 SQ.FT.

BALCONY = 57.48 SQ.FT.

TOTAL = 732.27 SQ.FT.



KEY ELEVATION



List of unit numbers with this unit plan:

VIEWS

Creek

A802, A804, A902, A904, A1002, A1004, A1102, A1104, A1402, A1404, A1502, A1504, A1602, A1604, A1702, A1704, A2002, A2004, A2102, A2104, A2202, A2204, A2302, A2304, A2702, A2704, A2802, A2804, A2902, A2904, A3202, A3204, A3302, A3304, A3402, A3404, A3502, A3504, A3802, A3804, A3902, A3904, A4002, A4004, A4102, A4104, A4402, A4404, A4502, A4504, A4602, A4604, A4702, A4704, A5102, A5104, A5106, A5202, A5204, A5206, A5302, A5304, A5306, A5602, A5604, A5606, A5702, A5704, A5706, A5802, A5804, A5806, A5902, A5904, A5906

Disclaimer: 1. All dimensions are in metric, measured to wall finishes. 2. All materials, dimensions & drawings are approximate. 3. Information is subject to change without notice, at developer's absolute discretion. 4. Actual area may vary from the stated area. 5. Drawing are not to scale. 6. All images used are for illustrative purpose only and do not represent the actual size, features, specifications, fittings and furnishings. 7. The developer reserves the right to make revisions/ alterations, at its absolute discretion, without any liability whatsoever.

1 BEDROOM APARTMENT

TYPE A (with powder room + balcony)

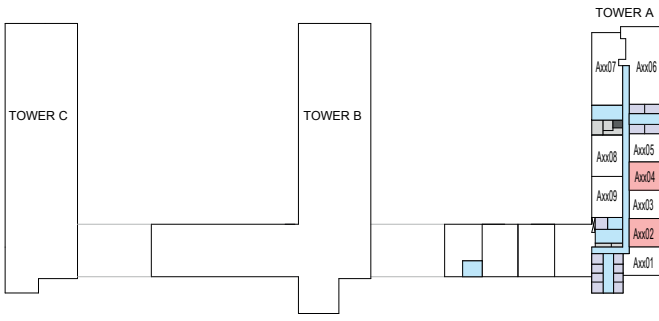
TOTAL SALEABLE AREA

SUITE = 674.79 SQ.FT.

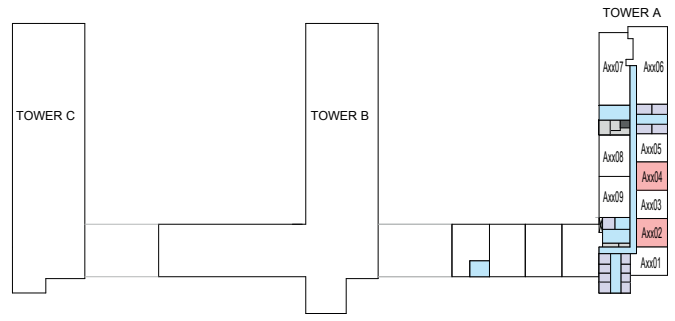
BALCONY = 57.48 SQ.FT.

TOTAL = 732.27 SQ.FT.

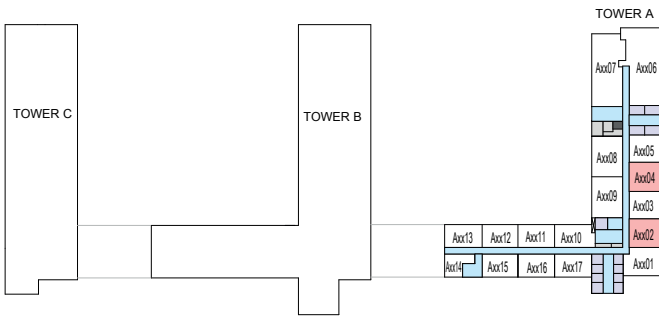
 UNIT



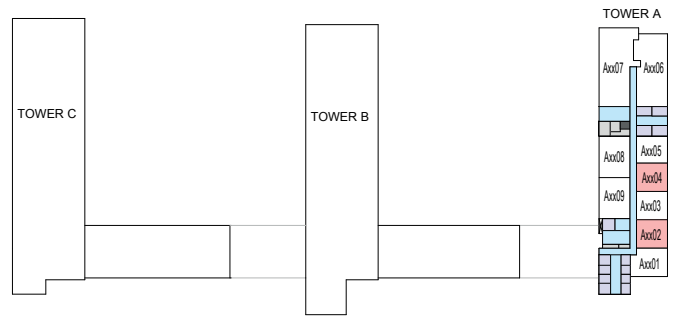
LEVEL 08,11,20,23,32,35,44,47
UPPER LEVEL



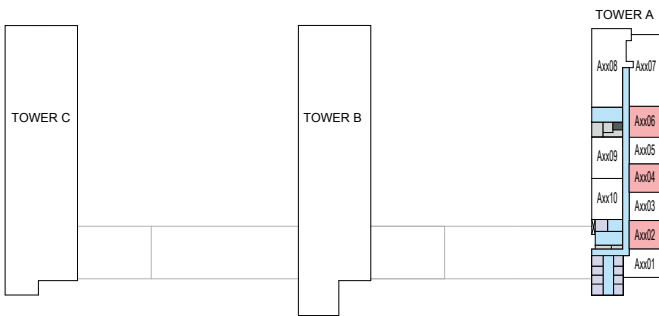
LEVEL 09,21,33,45
LOWER LEVEL



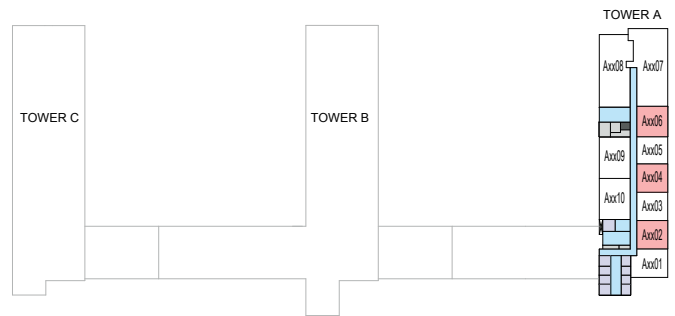
LEVEL 10,22,34,46



LEVEL 14-17,27-29,38-41



LEVEL 51-53



LEVEL 56-59

List of unit numbers with this unit plan:

VIEWS

Creek

A802, A804, A902, A904, A1002, A1004, A1102, A1104, A1402, A1404, A1502, A1504, A1602, A1604, A1702, A1704, A2002, A2004, A2102, A2104, A2202, A2204, A2302, A2304, A2702, A2704, A2802, A2804, A2902, A2904, A3202, A3204, A3302, A3304, A3402, A3404, A3502, A3504, A3802, A3804, A3902, A3904, A4002, A4004, A4102, A4104, A4402, A4404, A4502, A4504, A4602, A4604, A4702, A4704, A5102, A5104, A5106, A5202, A5204, A5206, A5302, A5304, A5306, A5602, A5604, A5606, A5702, A5704, A5706, A5802, A5804, A5806, A5902, A5904, A5906

Disclaimer: 1. All dimensions are in metric, measured to wall finishes. 2. All materials, dimensions & drawings are approximate. 3. Information is subject to change without notice, at developer's absolute discretion. 4. Actual area may vary from the stated area. 5. Drawing are not to scale. 6. All images used are for illustrative purpose only and do not represent the actual size, features, specifications, fittings and furnishings. 7. The developer reserves the right to make revisions/ alterations, at its absolute discretion, without any liability whatsoever.

1 BEDROOM APARTMENT

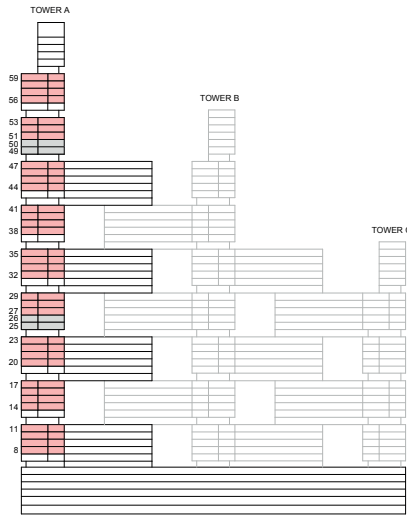
TYPE A (with powder room + balcony) VARIANT 1

TOTAL SALEABLE AREA

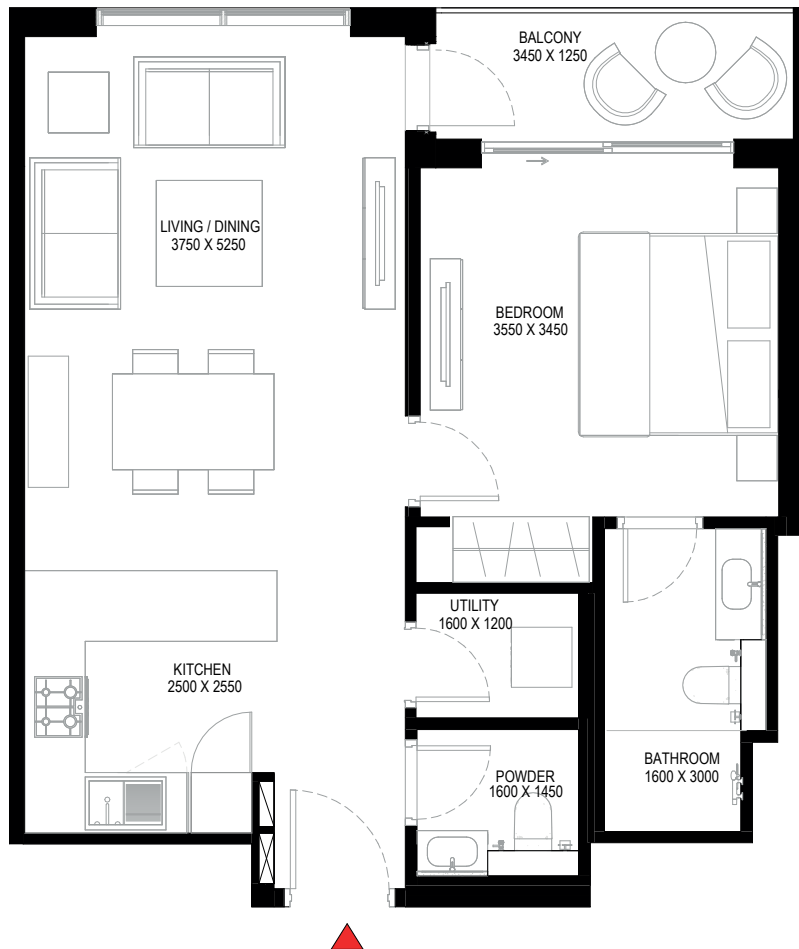
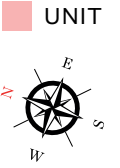
SUITE = 674.79 SQ.FT.

BALCONY = 57.48 SQ.FT.

TOTAL = 732.27 SQ.FT.



KEY ELEVATION



List of unit numbers with this unit plan:

VIEWS

Creek

A803, A805, A903, A905, A1003, A1005, A1103, A1105, A1403, A1405, A1503, A1505, A1603, A1605, A1703, A1705, A2003, A2005, A2103, A2105, A2203, A2205, A2303, A2305, A2703, A2705, A2803, A2805, A2903, A2905, A3203, A3205, A3303, A3305, A3403, A3405, A3503, A3505, A3803, A3805, A3903, A3905, A4003, A4005, A4103, A4105, A4403, A4405, A4503, A4505, A4603, A4605, A4703, A4705, A5103, A5105, A5203, A5205, A5303, A5305, A5603, A5605, A5703, A5705, A5803, A5805, A5903, A5905

Disclaimer: 1. All dimensions are in metric, measured to wall finishes. 2. All materials, dimensions & drawings are approximate. 3. Information is subject to change without notice, at developer's absolute discretion. 4. Actual area may vary from the stated area. 5. Drawing are not to scale. 6. All images used are for illustrative purpose only and do not represent the actual size, features, specifications, fittings and furnishings. 7. The developer reserves the right to make revisions/ alterations, at its absolute discretion, without any liability whatsoever.

1 BEDROOM APARTMENT

TYPE A (with powder room + balcony) VARIANT 1

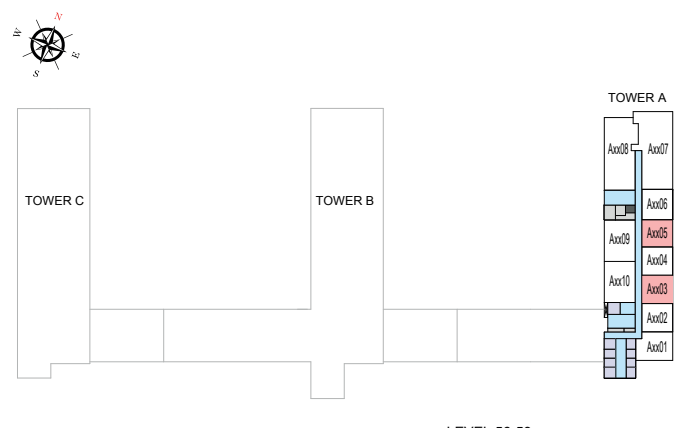
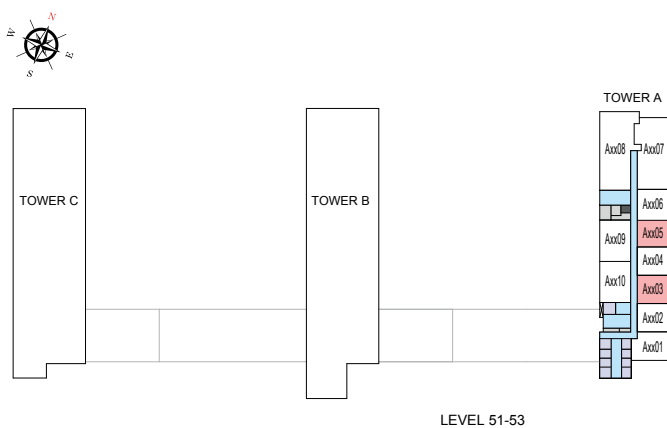
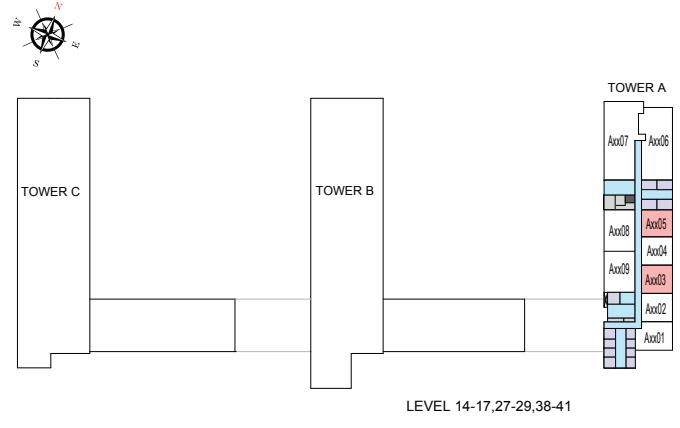
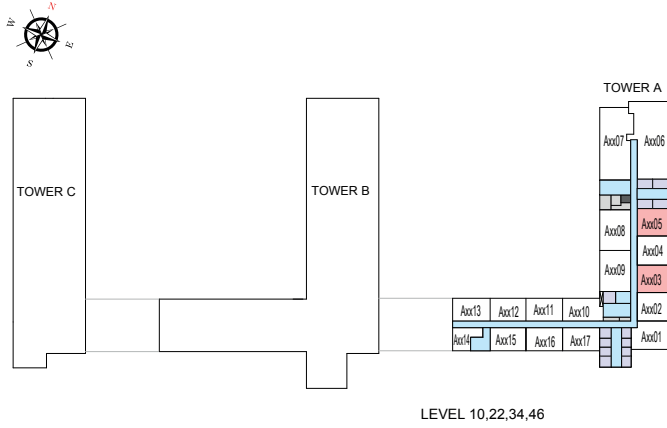
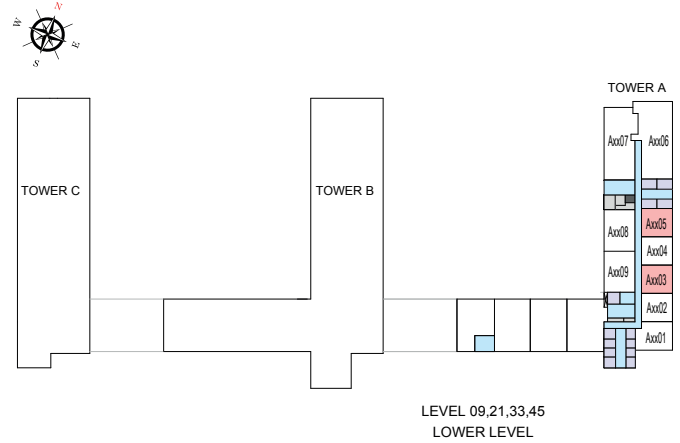
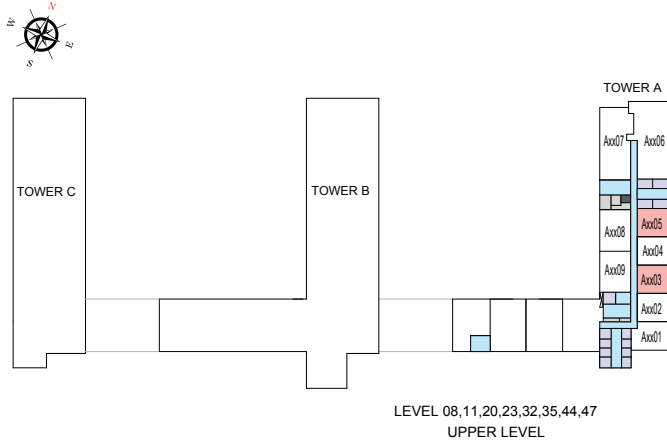
TOTAL SALEABLE AREA

SUITE = 674.79 SQ.FT.

BALCONY = 57.48 SQ.FT.

TOTAL = 732.27 SQ.FT.

 UNIT



List of unit numbers with this unit plan:

VIEWS

Creek
A803, A805, A903, A905, A1003, A1005, A1103, A1105, A1403, A1405, A1503, A1505, A1603, A1605, A1703, A1705, A2003, A2005, A2103, A2105, A2203, A2205, A2303, A2305, A2703, A2705, A2803, A2805, A2903, A2905, A3203, A3205, A3303, A3305, A3403, A3405, A3503, A3505, A3803, A3805, A3903, A3905, A4003, A4005, A4103, A4105, A4403, A4405, A4503, A4505, A4603, A4605, A4703, A4705, A5103, A5105, A5203, A5205, A5303, A5305, A5603, A5605, A5703, A5705, A5803, A5805, A5903, A5905

Disclaimer: 1. All dimensions are in metric, measured to wall finishes. 2. All materials, dimensions & drawings are approximate. 3. Information is subject to change without notice, at developer's absolute discretion. 4. Actual area may vary from the stated area. 5. Drawing are not to scale. 6. All images used are for illustrative purpose only and do not represent the actual size, features, specifications, fittings and furnishings. 7. The developer reserves the right to make revisions/ alterations, at its absolute discretion, without any liability whatsoever.

1 BEDROOM APARTMENT

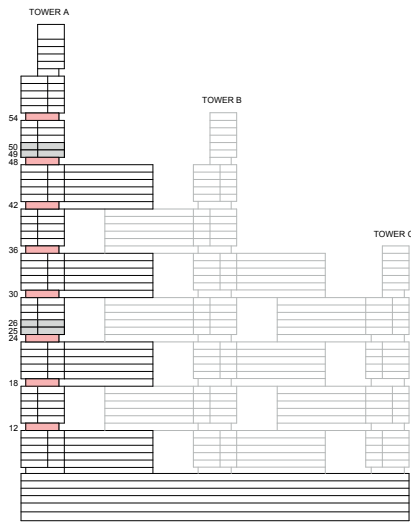
TYPE B (with powder room + yard)

TOTAL SALEABLE AREA

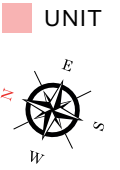
SUITE = 675.11 SQ.FT.

YARD = 132.72 SQ.FT.

TOTAL = 807.83 SQ.FT.



KEY ELEVATION



List of unit numbers with this unit plan:

VIEWS

Creek

A1202, A1204, A1802, A1804, A2402, A2404, A3002, A3004, A3602, A3604, A4202, A4204, A4802, A4804, A5402, A5404, A5406

Disclaimer: 1. All dimensions are in metric, measured to wall finishes. 2. All materials, dimensions & drawings are approximate. 3. Information is subject to change without notice, at developer's absolute discretion. 4. Actual area may vary from the stated area. 5. Drawing are not to scale. 6. All images used are for illustrative purpose only and do not represent the actual size, features, specifications, fittings and furnishings. 7. The developer reserves the right to make revisions/ alterations, at its absolute discretion, without any liability whatsoever.

1 BEDROOM APARTMENT

TYPE B (with powder room + yard)

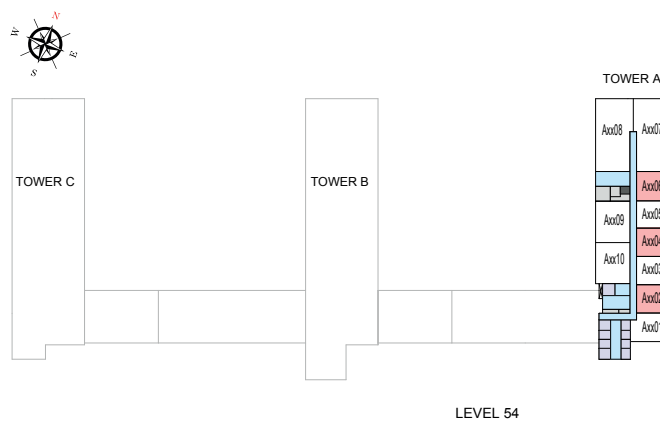
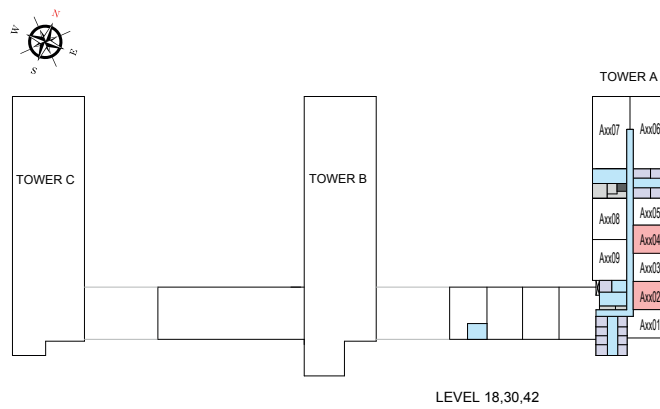
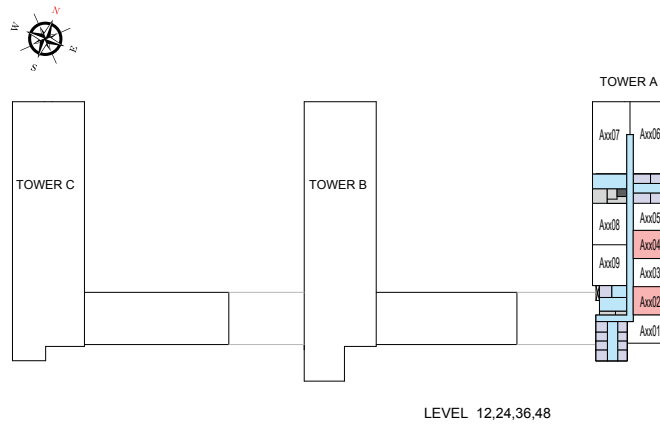
TOTAL SALEABLE AREA

SUITE = 675.11 SQ.FT.

YARD = 132.72 SQ.FT.

TOTAL = 807.83 SQ.FT.

■ UNIT



List of unit numbers with this unit plan:

VIEWS

Creek

A1202, A1204, A1802, A1804, A2402, A2404, A3002, A3004, A3602, A3604, A4202, A4204, A4802, A4804, A5402, A5404, A5406

Disclaimer: 1. All dimensions are in metric, measured to wall finishes. 2. All materials, dimensions & drawings are approximate. 3. Information is subject to change without notice, at developer's absolute discretion. 4. Actual area may vary from the stated area. 5. Drawing are not to scale. 6. All images used are for illustrative purpose only and do not represent the actual size, features, specifications, fittings and furnishings. 7. The developer reserves the right to make revisions/ alterations, at its absolute discretion, without any liability whatsoever.

1 BEDROOM APARTMENT

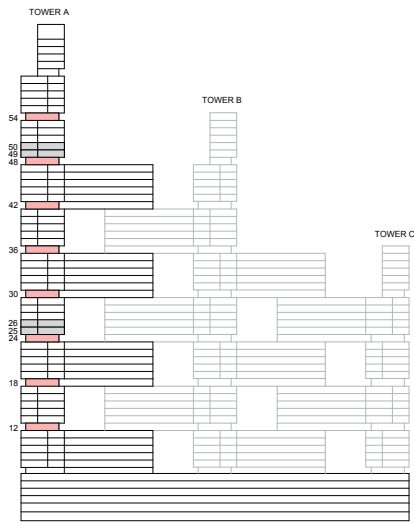
TYPE B (with powder room + yard) VARIANT 1

TOTAL SALEABLE AREA

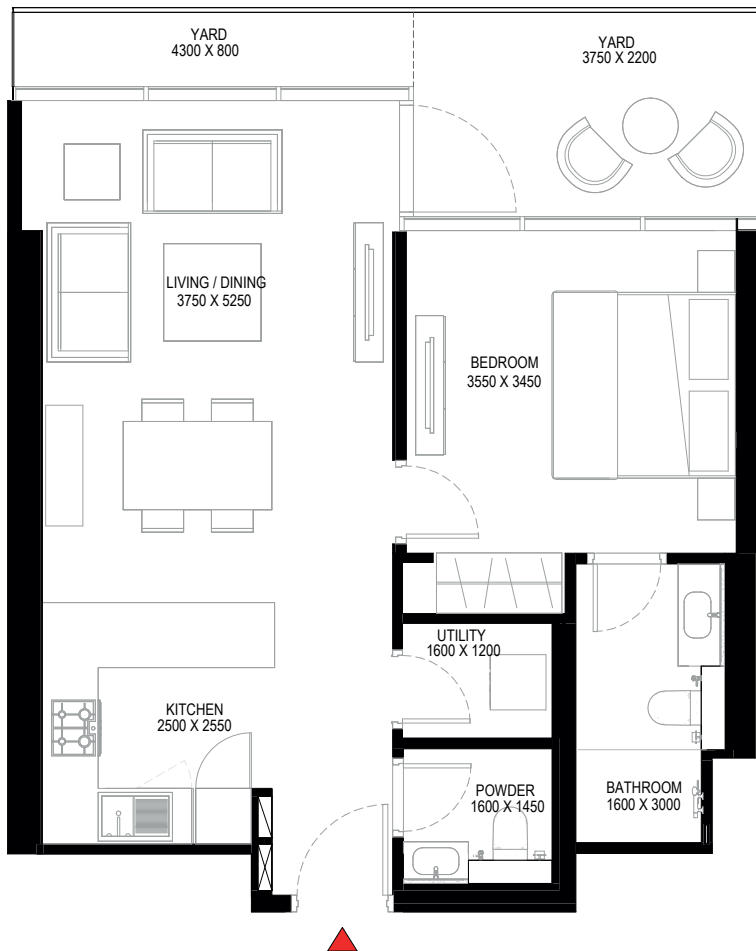
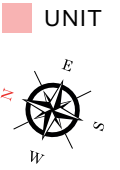
SUITE = 675.11 SQ.FT.

YARD = 132.72 SQ.FT.

TOTAL = 807.83 SQ.FT.



KEY ELEVATION



List of unit numbers with this unit plan:

VIEWS

Creek

A1203, A1205, A1803, A1805, A2403, A2405, A3003, A3005, A3603, A3605, A4203, A4205, A4803, A4805, A5403, A5405

Disclaimer: 1. All dimensions are in metric, measured to wall finishes. 2. All materials, dimensions & drawings are approximate. 3. Information is subject to change without notice, at developer's absolute discretion. 4. Actual area may vary from the stated area. 5. Drawing are not to scale. 6. All images used are for illustrative purpose only and do not represent the actual size, features, specifications, fittings and furnishings. 7. The developer reserves the right to make revisions/ alterations, at its absolute discretion, without any liability whatsoever.

1 BEDROOM APARTMENT

TYPE B (with powder room + yard) VARIANT 1

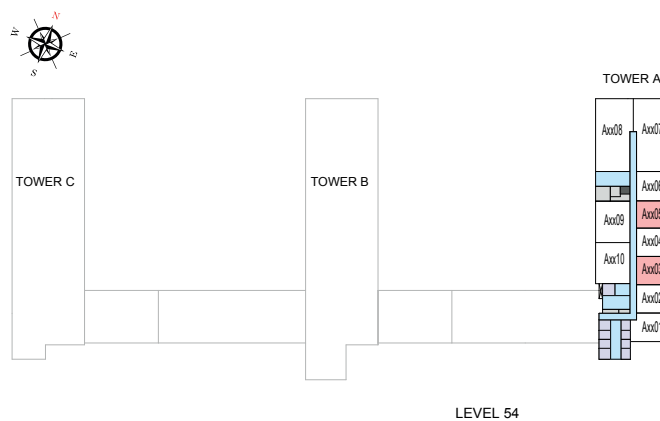
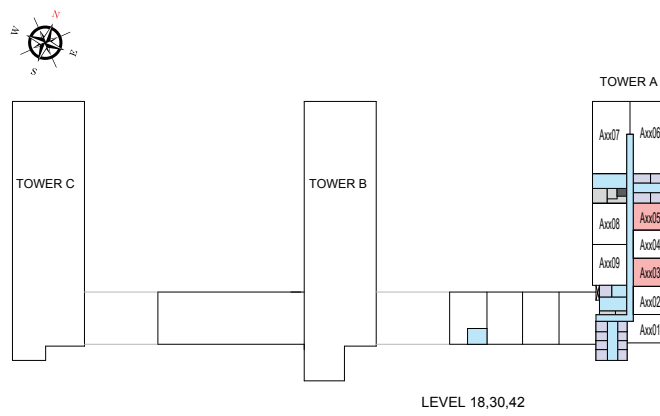
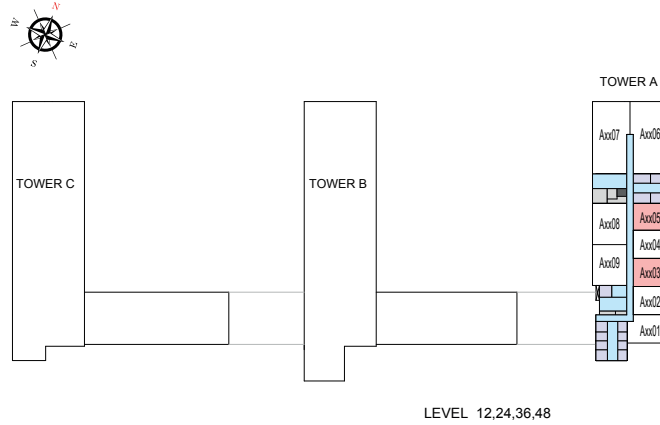
TOTAL SALEABLE AREA

SUITE = 675.11 SQ.FT.

YARD = 132.72 SQ.FT.

TOTAL = 807.83 SQ.FT.

■ UNIT



List of unit numbers with this unit plan:

VIEWS

Creek

A1203, A1205, A1803, A1805, A2403, A2405, A3003, A3005, A3603, A3605, A4203, A4205, A4803, A4805, A5403, A5405

Disclaimer: 1. All dimensions are in metric, measured to wall finishes. 2. All materials, dimensions & drawings are approximate. 3. Information is subject to change without notice, at developer's absolute discretion. 4. Actual area may vary from the stated area. 5. Drawing are not to scale. 6. All images used are for illustrative purpose only and do not represent the actual size, features, specifications, fittings and furnishings. 7. The developer reserves the right to make revisions/ alterations, at its absolute discretion, without any liability whatsoever.

1 BEDROOM APARTMENT

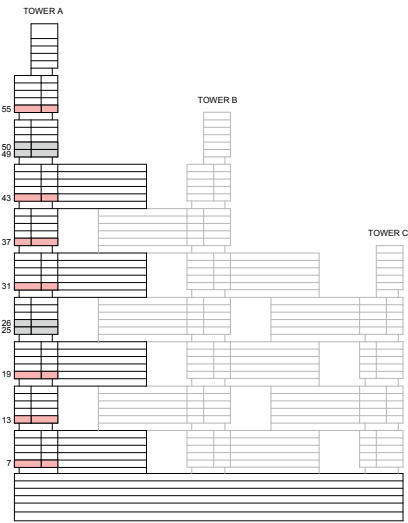
TYPE C (with powder room + yard)

TOTAL SALEABLE AREA

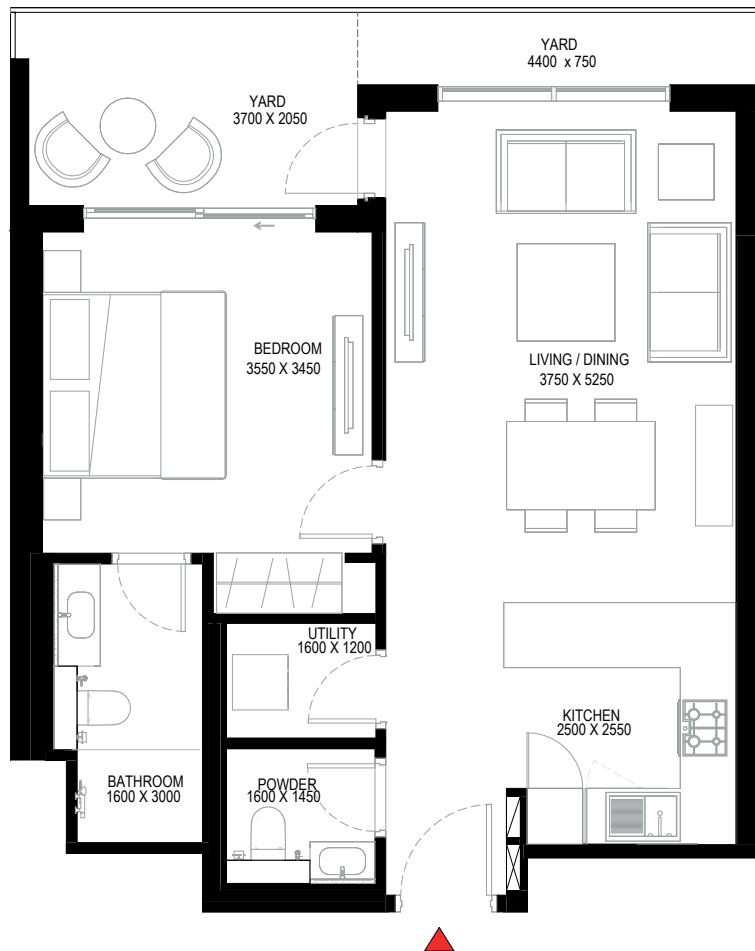
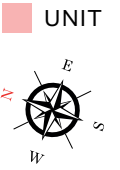
SUITE = 674.79 SQ.FT.

YARD = 133.04 SQ.FT.

TOTAL = 807.83 SQ.FT.



KEY ELEVATION



List of unit numbers with this unit plan:

VIEWS

Creek

A702, A704, A1302, A1304, A1902, A1904, A3102, A3104, A3702, A3704, A4302, A4304, A5502, A5504, A5506

Disclaimer: 1. All dimensions are in metric, measured to wall finishes. 2. All materials, dimensions & drawings are approximate. 3. Information is subject to change without notice, at developer's absolute discretion. 4. Actual area may vary from the stated area. 5. Drawing are not to scale. 6. All images used are for illustrative purpose only and do not represent the actual size, features, specifications, fittings and furnishings. 7. The developer reserves the right to make revisions/ alterations, at its absolute discretion, without any liability whatsoever.

1 BEDROOM APARTMENT

TYPE C (with powder room + yard)

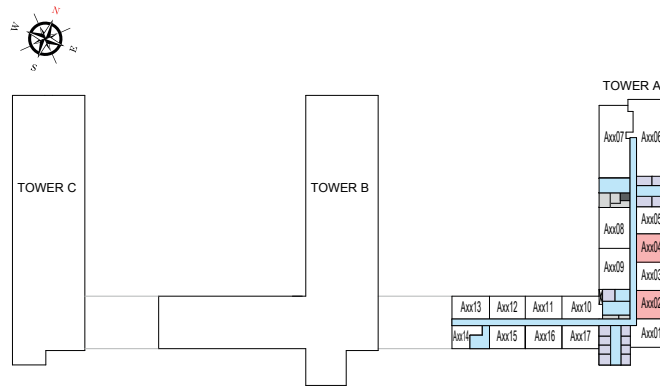
TOTAL SALEABLE AREA

SUITE = 674.79 SQ.FT.

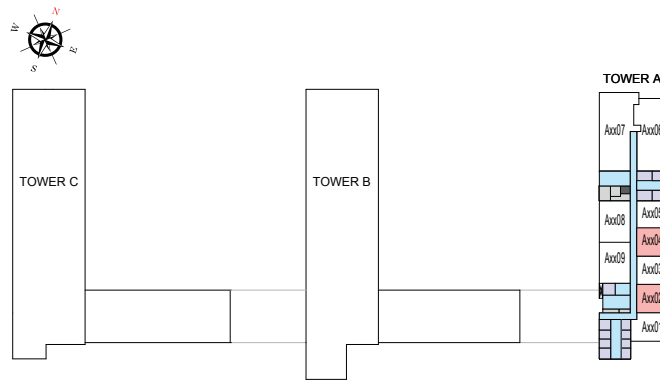
YARD = 133.04 SQ.FT.

TOTAL = 807.83 SQ.FT.

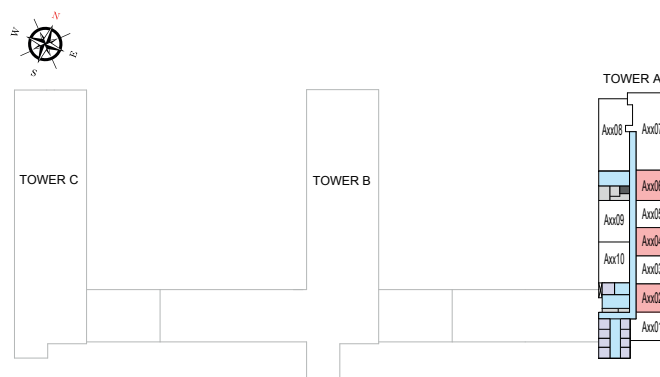
■ UNIT



LEVEL 07,19,31,43
ACCESS LEVEL



LEVEL 13,37



LEVEL 55

List of unit numbers with this unit plan:

VIEWS

Creek

A702, A704, A1302, A1304, A1902, A1904, A3102, A3104, A3702, A3704, A4302, A4304, A5502, A5504, A5506

Disclaimer: 1. All dimensions are in metric, measured to wall finishes. 2. All materials, dimensions & drawings are approximate. 3. Information is subject to change without notice, at developer's absolute discretion. 4. Actual area may vary from the stated area. 5. Drawing are not to scale. 6. All images used are for illustrative purpose only and do not represent the actual size, features, specifications, fittings and furnishings. 7. The developer reserves the right to make revisions/ alterations, at its absolute discretion, without any liability whatsoever.

1 BEDROOM APARTMENT

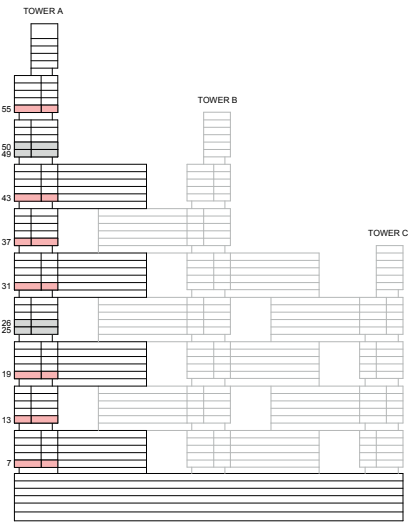
TYPE C (with powder room + yard) VARIANT 1

TOTAL SALEABLE AREA

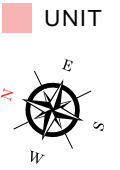
SUITE = 674.79 SQ.FT.

YARD = 133.04 SQ.FT.

TOTAL = 807.83 SQ.FT.



KEY ELEVATION



List of unit numbers with this unit plan:

VIEWS

Creek

A703, A705, A1303, A1305, A1903, A1905, A3103, A3105, A3703, A3705, A4303, A4305, A5503, A5505

Disclaimer: 1. All dimensions are in metric, measured to wall finishes. 2. All materials, dimensions & drawings are approximate. 3. Information is subject to change without notice, at developer's absolute discretion. 4. Actual area may vary from the stated area. 5. Drawing are not to scale. 6. All images used are for illustrative purpose only and do not represent the actual size, features, specifications, fittings and furnishings. 7. The developer reserves the right to make revisions/ alterations, at its absolute discretion, without any liability whatsoever.

1 BEDROOM APARTMENT

TYPE C (with powder room + yard) VARIANT 1

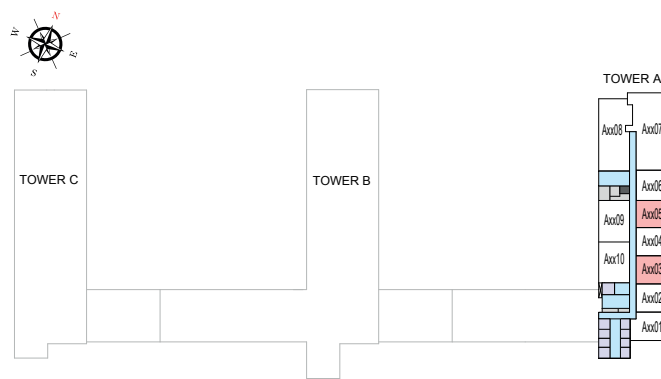
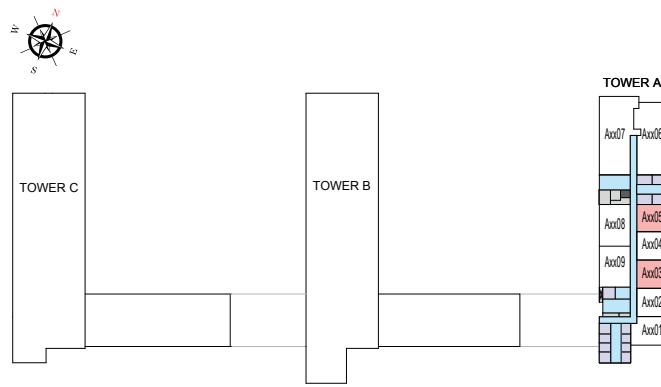
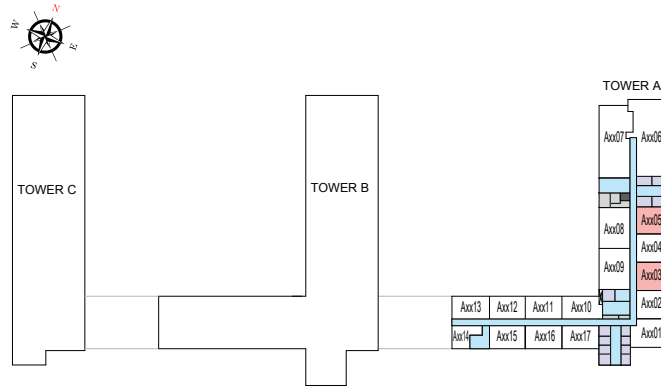
TOTAL SALEABLE AREA

SUITE = 674.79 SQ.FT.

YARD = 133.04 SQ.FT.

TOTAL = 807.83 SQ.FT.

■ UNIT



List of unit numbers with this unit plan:

VIEWS

Creek

A703, A705, A1303, A1305, A1903, A1905, A3103, A3105, A3703, A3705, A4303, A4305, A5503, A5505

Disclaimer: 1. All dimensions are in metric, measured to wall finishes. 2. All materials, dimensions & drawings are approximate. 3. Information is subject to change without notice, at developer's absolute discretion. 4. Actual area may vary from the stated area. 5. Drawing are not to scale. 6. All images used are for illustrative purpose only and do not represent the actual size, features, specifications, fittings and furnishings. 7. The developer reserves the right to make revisions/ alterations, at its absolute discretion, without any liability whatsoever.

2 BEDROOM APARTMENT

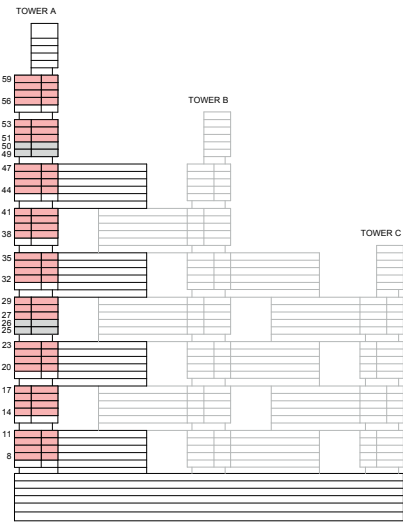
TYPE A (with powder room + balcony)

TOTAL SALEABLE AREA

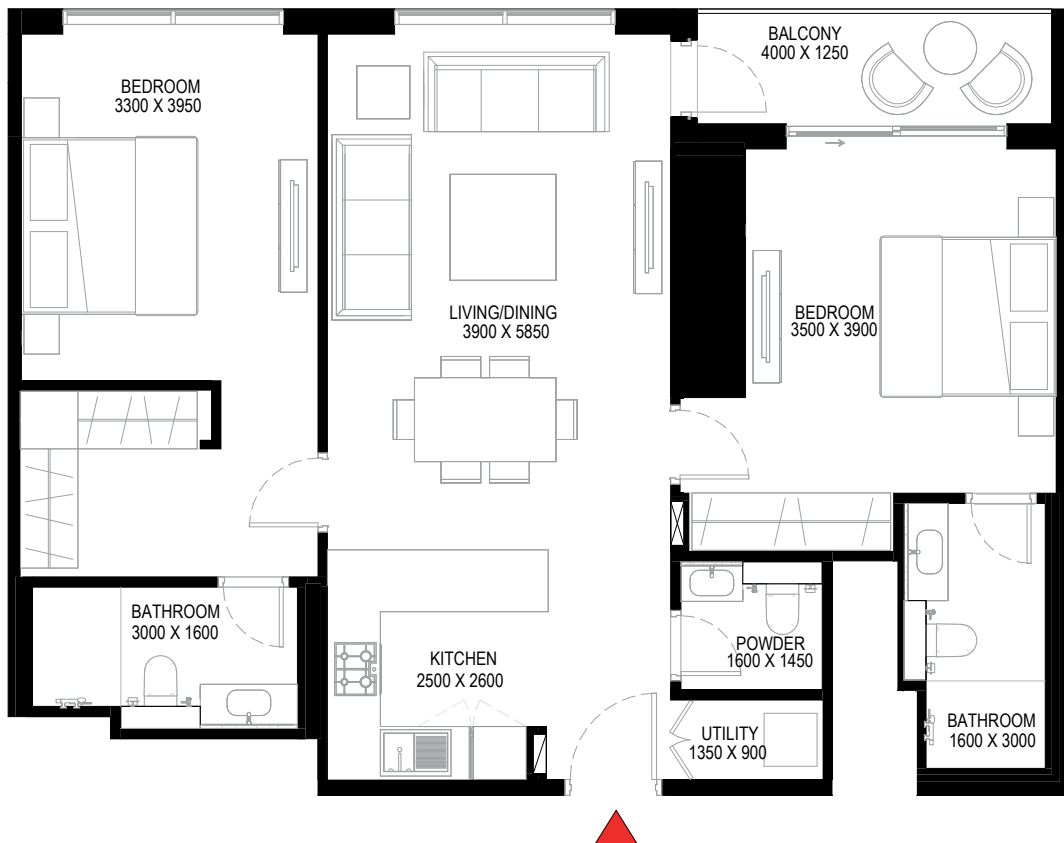
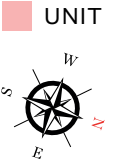
SUITE = 1,034.63 SQ.FT.

BALCONY = 64.69 SQ.FT.

TOTAL = 1,099.32 SQ.FT.



KEY ELEVATION



List of unit numbers with this unit plan:

VIEWS

Ras Al Khor, Amenities
A809, A909

Ras Al Khor, Golf Course, Amenities
A1009, A1109, A1409, A1509, A1609, A1709, A2009, A2109, A2209, A2309

Ras Al Khor, Golf Course
A2709, A2809, A2909, A3209, A3309, A3409, A3509, A3809, A3909, A4009, A4109, A4409, A4509, A4609, A4709, A5110, A5210, A5310, A5610, A5710, A5810, A5910

Disclaimer: 1. All dimensions are in metric, measured to wall finishes. 2. All materials, dimensions & drawings are approximate. 3. Information is subject to change without notice, at developer's absolute discretion. 4. Actual area may vary from the stated area. 5. Drawing are not to scale. 6. All images used are for illustrative purpose only and do not represent the actual size, features, specifications, fittings and furnishings. 7. The developer reserves the right to make revisions/ alterations, at its absolute discretion, without any liability whatsoever.

2 BEDROOM APARTMENT

TYPE A (with powder room + balcony)

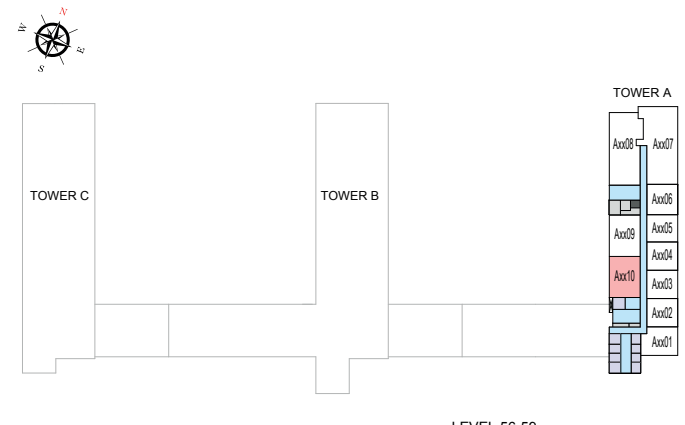
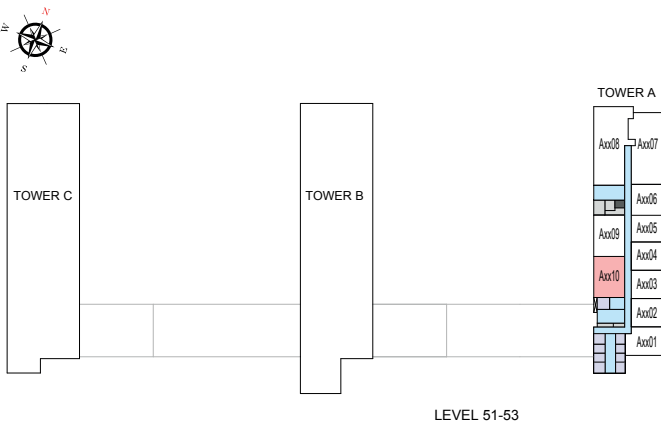
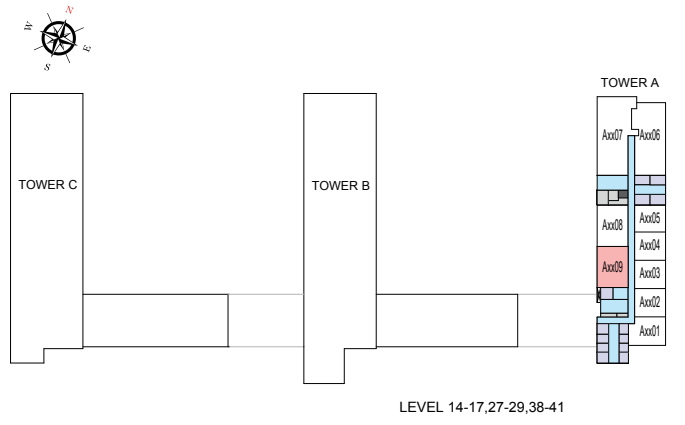
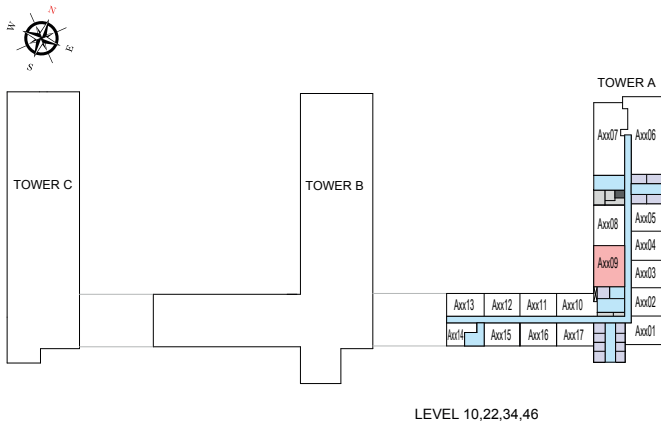
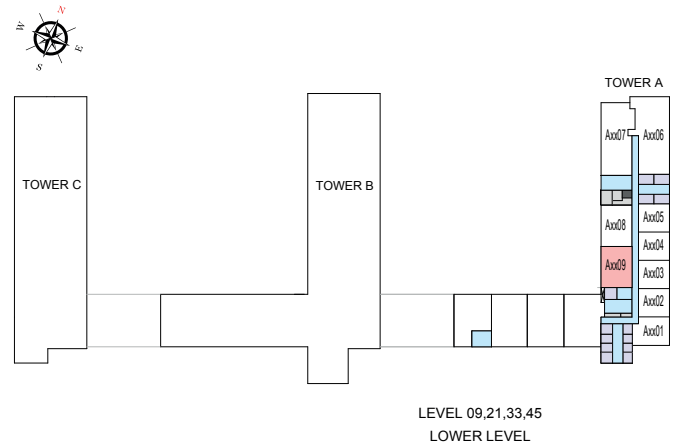
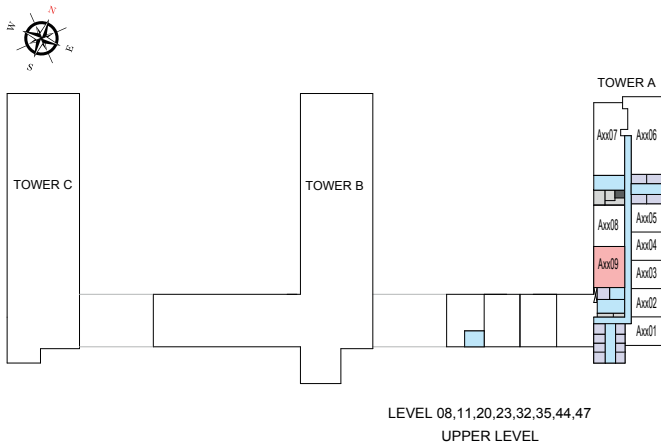
TOTAL SALEABLE AREA

SUITE = 1,034.63 SQ.FT.

BALCONY = 64.69 SQ.FT.

TOTAL = 1,099.32 SQ.FT.

 UNIT



List of unit numbers with this unit plan:

VIEWS

Ras Al Khor, Amenities
A809, A909

Ras Al Khor, Golf Course, Amenities
A1009, A1109, A1409, A1509, A1609, A1709, A2009, A2109, A2209, A2309

Ras Al Khor, Golf Course
A2709, A2809, A2909, A3209, A3309, A3409, A3509, A3809, A3909, A4009, A4109, A4409, A4509, A4609, A4709, A5110, A5210, A5310, A5610, A5710, A5810, A5910

Disclaimer: 1. All dimensions are in metric, measured to wall finishes. 2. All materials, dimensions & drawings are approximate. 3. Information is subject to change without notice, at developer's absolute discretion. 4. Actual area may vary from the stated area. 5. Drawing are not to scale. 6. All images used are for illustrative purpose only and do not represent the actual size, features, specifications, fittings and furnishings. 7. The developer reserves the right to make revisions/ alterations, at its absolute discretion, without any liability whatsoever.

2 BEDROOM APARTMENT

TYPE A (with powder room + balcony) VARIANT 1

TOTAL SALEABLE AREA

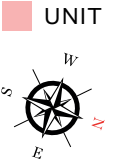
SUITE = 1,034.63 SQ.FT.

BALCONY = 64.69 SQ.FT.

TOTAL = 1,099.32 SQ.FT.



KEY ELEVATION



List of unit numbers with this unit plan:

VIEWS

Ras Al Khor, Amenities
A808, A908

Ras Al Khor, Golf Course, Amenities
A1008, A1108, A1408, A1508, A1608, A1708, A2008, A2108, A2208, A2308

Ras Al Khor, Golf Course
A2708, A2808, A2908, A3208, A3308, A3408, A3508, A3808, A3908, A4008, A4108, A4408, A4508, A4608, A4708, A5109, A5209, A5309, A5609, A5709, A5809, A5909

Disclaimer: 1. All dimensions are in metric, measured to wall finishes. 2. All materials, dimensions & drawings are approximate. 3. Information is subject to change without notice, at developer's absolute discretion. 4. Actual area may vary from the stated area. 5. Drawing are not to scale. 6. All images used are for illustrative purpose only and do not represent the actual size, features, specifications, fittings and furnishings. 7. The developer reserves the right to make revisions/ alterations, at its absolute discretion, without any liability whatsoever.

2 BEDROOM APARTMENT

TYPE A (with powder room + balcony) VARIANT 1

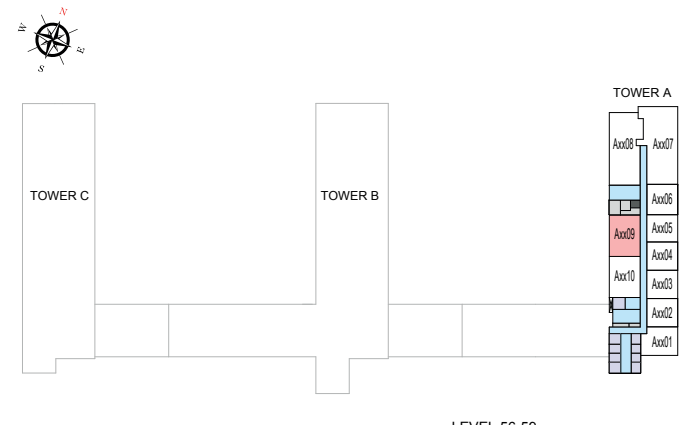
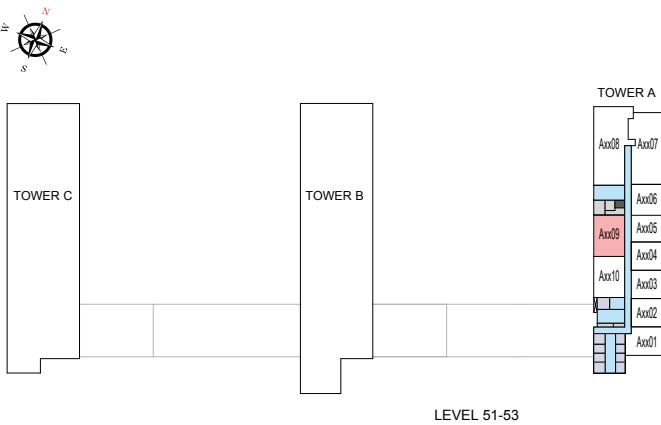
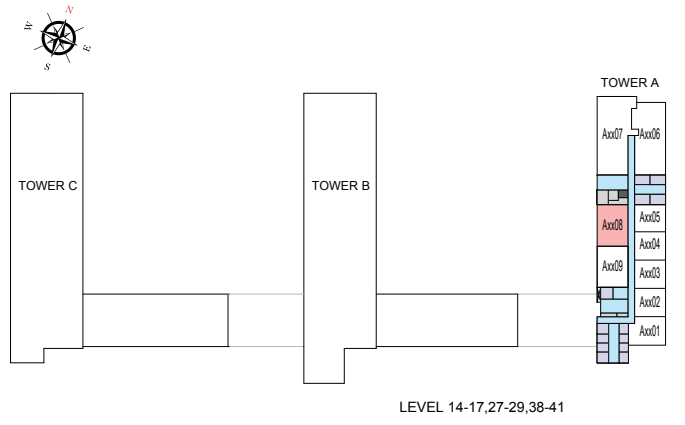
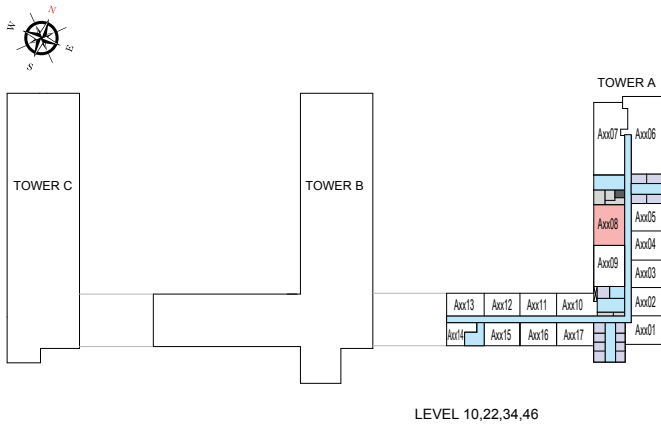
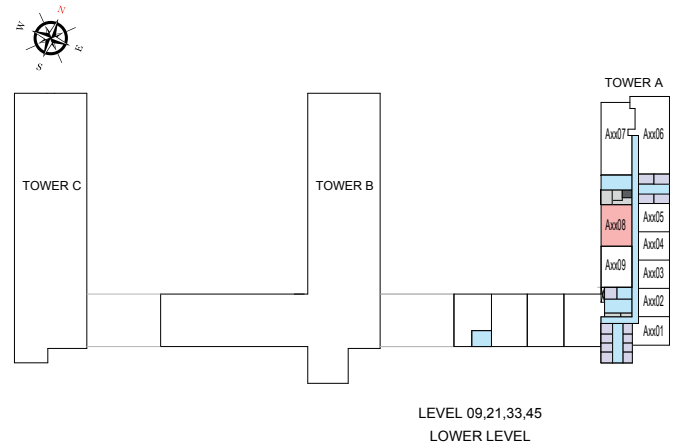
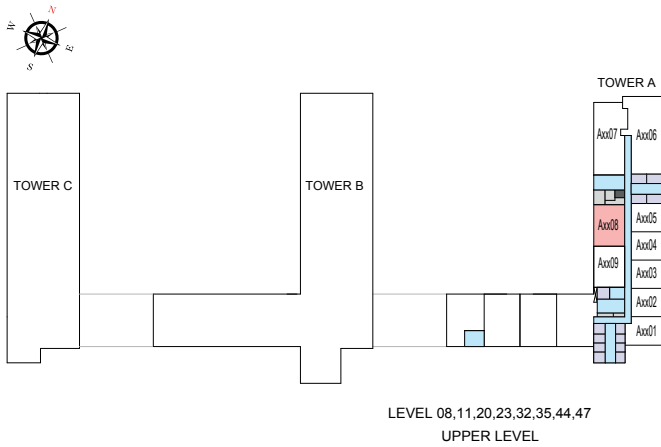
TOTAL SALEABLE AREA

SUITE = 1,034.63 SQ.FT.

BALCONY = 64.69 SQ.FT.

TOTAL = 1,099.32 SQ.FT.

 UNIT



List of unit numbers with this unit plan:

VIEWS

Ras Al Khor, Amenities
A808, A908

Ras Al Khor, Golf Course, Amenities
A1008, A1108, A1408, A1508, A1608, A1708, A2008, A2108, A2208, A2308

Ras Al Khor, Golf Course
A2708, A2808, A2908, A3208, A3308, A3408, A3508, A3808, A3908, A4008, A4108, A4408, A4508, A4608, A4708, A5109, A5209, A5309, A5609, A5709, A5809, A5909

Disclaimer: 1. All dimensions are in metric, measured to wall finishes. 2. All materials, dimensions & drawings are approximate. 3. Information is subject to change without notice, at developer's absolute discretion. 4. Actual area may vary from the stated area. 5. Drawing are not to scale. 6. All images used are for illustrative purpose only and do not represent the actual size, features, specifications, fittings and furnishings. 7. The developer reserves the right to make revisions/ alterations, at its absolute discretion, without any liability whatsoever.

2 BEDROOM APARTMENT

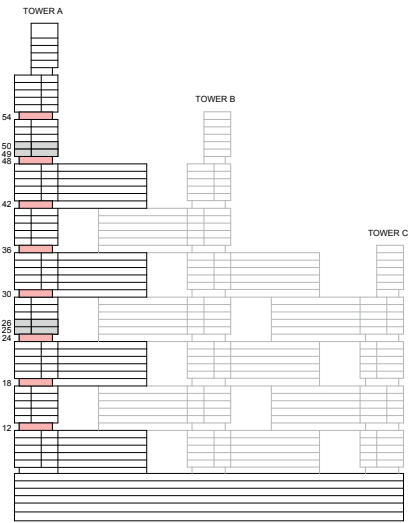
TYPE G (with powder room + yard)

TOTAL SALEABLE AREA

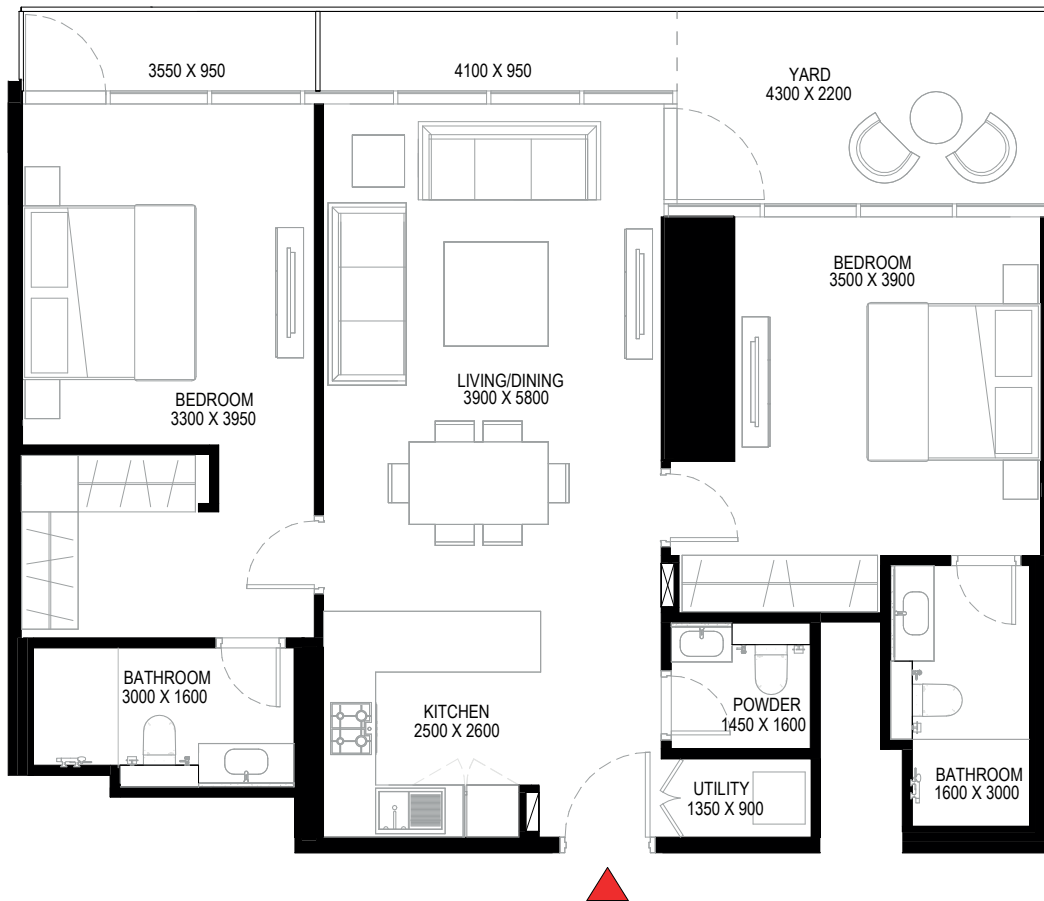
SUITE = 1,025.05 SQ.FT.

YARD = 184.82 SQ.FT.

TOTAL = 1,209.87 SQ.FT.



KEY ELEVATION



List of unit numbers with this unit plan:

VIEWS

Ras Al Khor, Golf Course, Amenities
A1209, A1809, A2409

Ras Al Khor, Golf Course
A3009, A3609, A4209, A4809, A5410

Disclaimer: 1. All dimensions are in metric, measured to wall finishes. 2. All materials, dimensions & drawings are approximate. 3. Information is subject to change without notice, at developer's absolute discretion. 4. Actual area may vary from the stated area. 5. Drawing are not to scale. 6. All images used are for illustrative purpose only and do not represent the actual size, features, specifications, fittings and furnishings. 7. The developer reserves the right to make revisions/ alterations, at its absolute discretion, without any liability whatsoever.

2 BEDROOM APARTMENT

TYPE G (with powder room + yard)

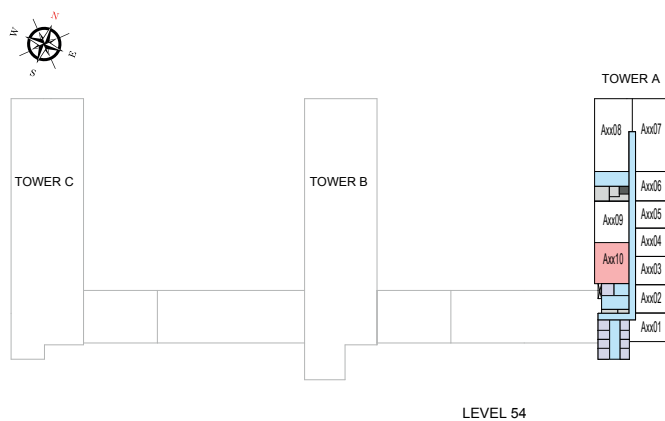
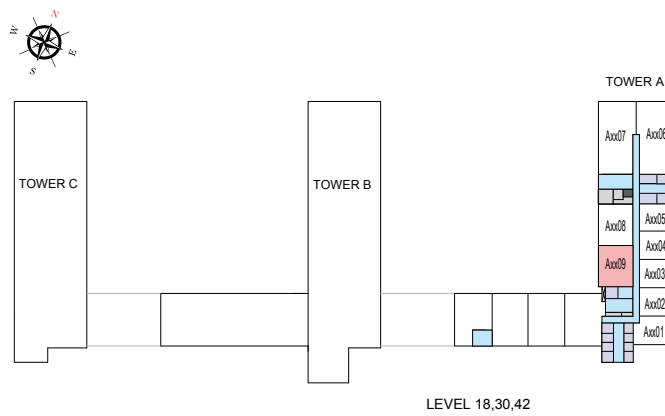
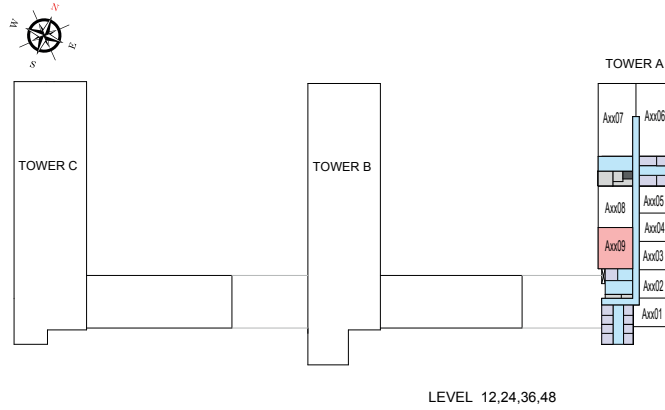
TOTAL SALEABLE AREA

SUITE = 1,025.05 SQ.FT.

YARD = 184.82 SQ.FT.

TOTAL = 1,209.87 SQ.FT.

■ UNIT



List of unit numbers with this unit plan:

VIEWS

Ras Al Khor, Golf Course, Amenities

A1209, A1809, A2409

Ras Al Khor, Golf Course

A3009, A3609, A4209, A4809, A5410

Disclaimer: 1. All dimensions are in metric, measured to wall finishes. 2. All materials, dimensions & drawings are approximate. 3. Information is subject to change without notice, at developer's absolute discretion. 4. Actual area may vary from the stated area. 5. Drawing are not to scale. 6. All images used are for illustrative purpose only and do not represent the actual size, features, specifications, fittings and furnishings. 7. The developer reserves the right to make revisions/ alterations, at its absolute discretion, without any liability whatsoever.

2 BEDROOM APARTMENT

TYPE G (with powder room + yard) VARIANT 1

TOTAL SALEABLE AREA

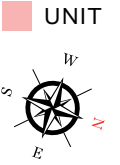
SUITE = 1,025.05 SQ.FT.

YARD = 184.82 SQ.FT.

TOTAL = 1,209.87 SQ.FT.



KEY ELEVATION



List of unit numbers with this unit plan:

VIEWS

Ras Al Khor, Golf Course, Amenities
A1208, A1808, A2408

Ras Al Khor, Golf Course
A3008, A3608, A4208, A4808, A5409

Disclaimer: 1. All dimensions are in metric, measured to wall finishes. 2. All materials, dimensions & drawings are approximate. 3. Information is subject to change without notice, at developer's absolute discretion. 4. Actual area may vary from the stated area. 5. Drawing are not to scale. 6. All images used are for illustrative purpose only and do not represent the actual size, features, specifications, fittings and furnishings. 7. The developer reserves the right to make revisions/ alterations, at its absolute discretion, without any liability whatsoever.

2 BEDROOM APARTMENT

TYPE G (with powder room + yard) VARIANT 1

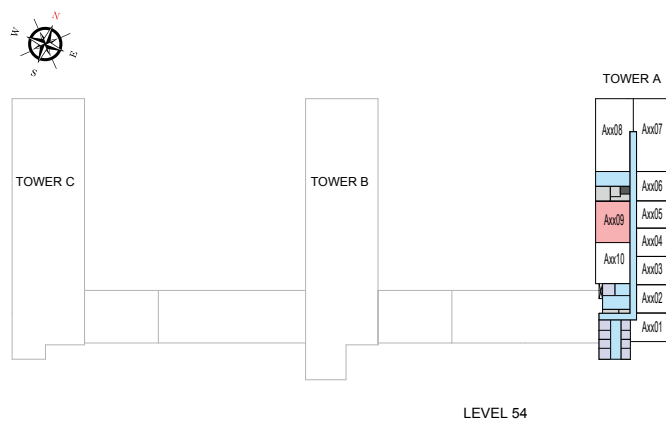
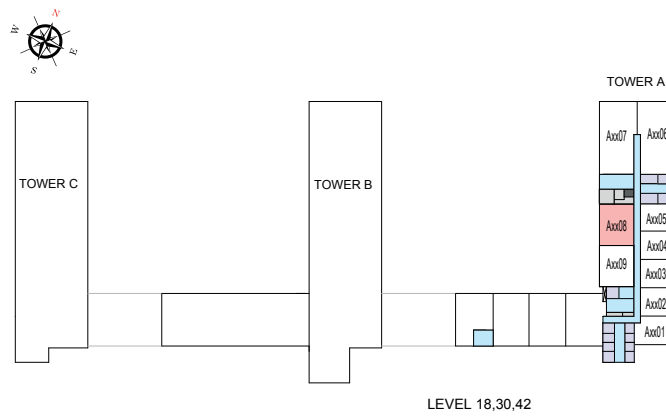
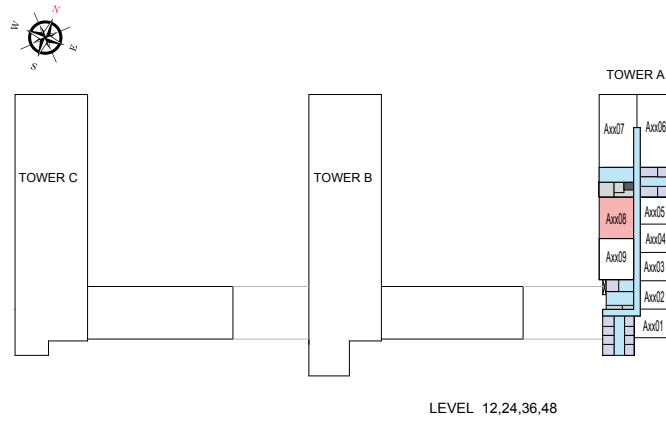
TOTAL SALEABLE AREA

SUITE = 1,025.05 SQ.FT.

YARD = 184.82 SQ.FT.

TOTAL = 1,209.87 SQ.FT.

■ UNIT



List of unit numbers with this unit plan:

VIEWS

Ras Al Khor, Golf Course, Amenities

A1208, A1808, A2408

Ras Al Khor, Golf Course

A3008, A3608, A4208, A4808, A5409

Disclaimer: 1. All dimensions are in metric, measured to wall finishes. 2. All materials, dimensions & drawings are approximate. 3. Information is subject to change without notice, at developer's absolute discretion. 4. Actual area may vary from the stated area. 5. Drawing are not to scale. 6. All images used are for illustrative purpose only and do not represent the actual size, features, specifications, fittings and furnishings. 7. The developer reserves the right to make revisions/ alterations, at its absolute discretion, without any liability whatsoever.

2 BEDROOM APARTMENT

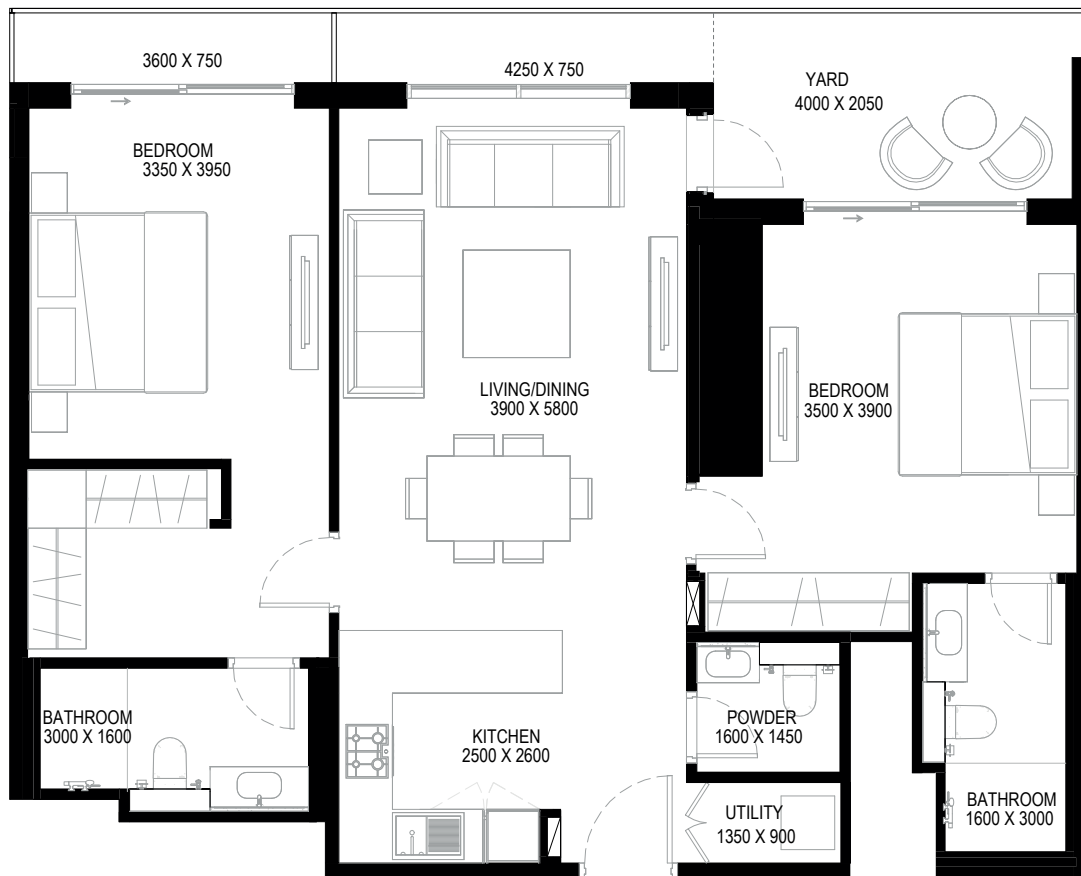
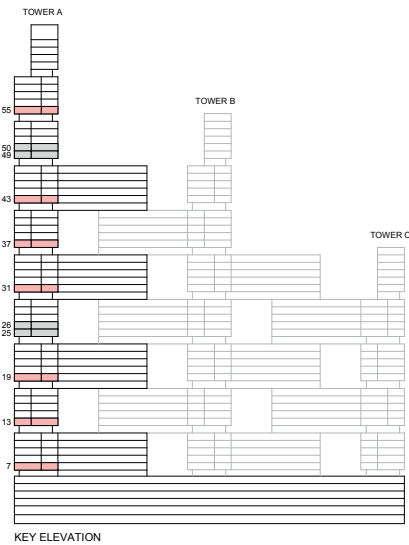
TYPE P (with powder room + yard)

TOTAL SALEABLE AREA

SUITE = 1,034.61 SQ.FT.

YARD = 178.41 SQ.FT.

TOTAL = 1,213.02 SQ.FT.



List of unit numbers with this unit plan:

VIEWS

Ras Al Khor, Amenities
A709

Ras Al Khor, Golf Course, Amenities
A1309, A1909

Ras Al Khor, Golf Course
A3109, A3709, A4309, A5510

Disclaimer: 1. All dimensions are in metric, measured to wall finishes. 2. All materials, dimensions & drawings are approximate. 3. Information is subject to change without notice, at developer's absolute discretion. 4. Actual area may vary from the stated area. 5. Drawing are not to scale. 6. All images used are for illustrative purpose only and do not represent the actual size, features, specifications, fittings and furnishings. 7. The developer reserves the right to make revisions/ alterations, at its absolute discretion, without any liability whatsoever.

2 BEDROOM APARTMENT

TYPE P (with powder room + yard)

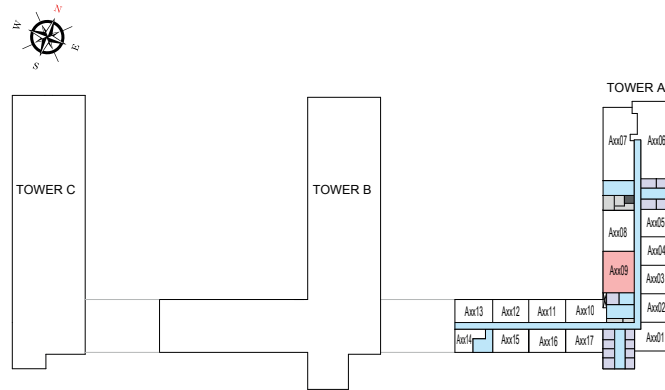
TOTAL SALEABLE AREA

SUITE = 1,034.61 SQ.FT.

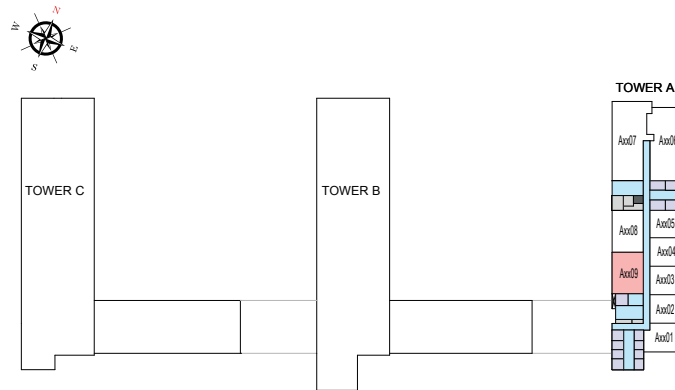
YARD = 178.41 SQ.FT.

TOTAL = 1,213.02 SQ.FT.

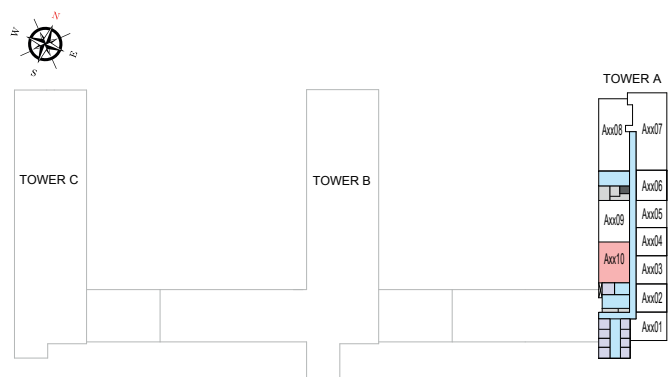
■ UNIT



LEVEL 07, 19, 31, 43
ACCESS LEVEL



LEVEL 13, 37



LEVEL 55

List of unit numbers with this unit plan:

VIEWS

Ras Al Khor, Amenities
A709

Ras Al Khor, Golf Course, Amenities
A1309, A1909

Ras Al Khor, Golf Course
A3109, A3709, A4309, A5510

Disclaimer: 1. All dimensions are in metric, measured to wall finishes. 2. All materials, dimensions & drawings are approximate. 3. Information is subject to change without notice, at developer's absolute discretion. 4. Actual area may vary from the stated area. 5. Drawing are not to scale. 6. All images used are for illustrative purpose only and do not represent the actual size, features, specifications, fittings and furnishings. 7. The developer reserves the right to make revisions/ alterations, at its absolute discretion, without any liability whatsoever.

2 BEDROOM APARTMENT

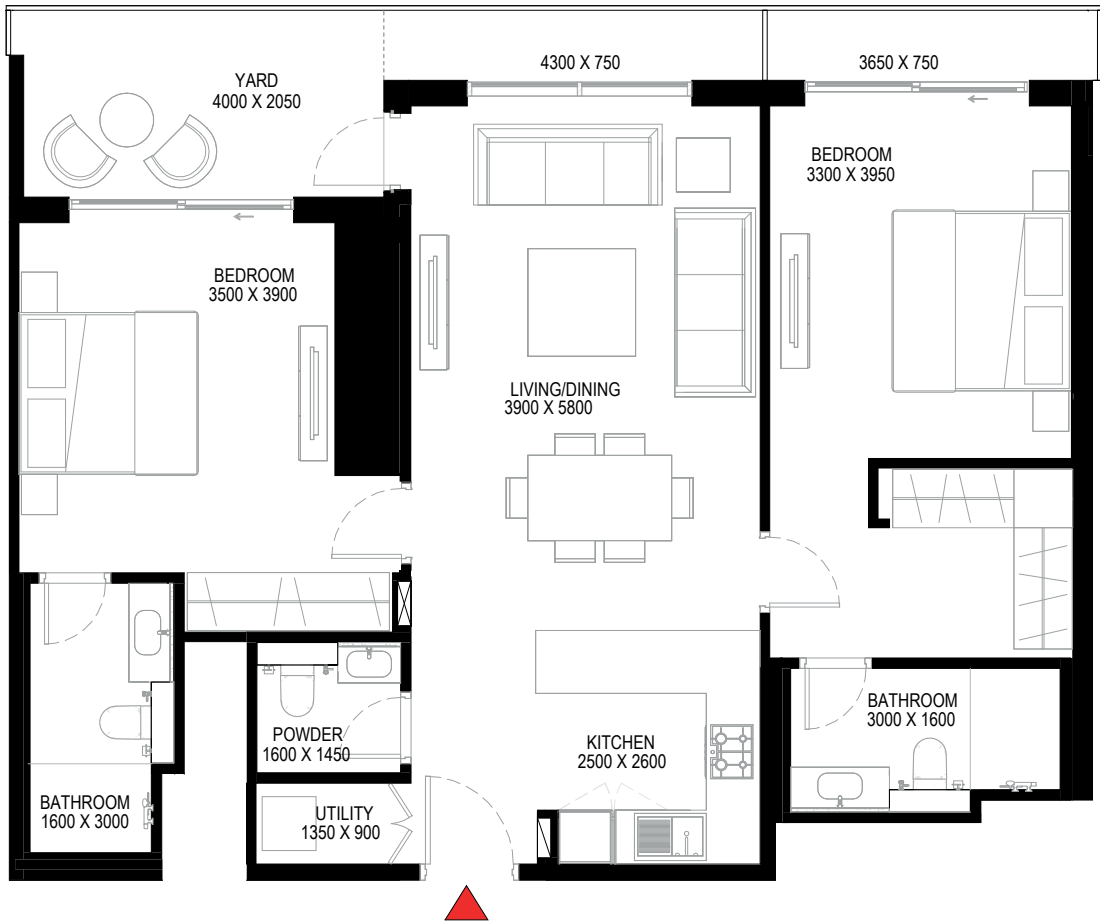
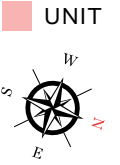
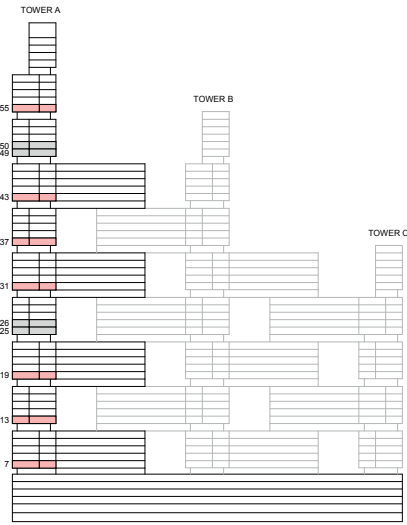
TYPE P (with powder room + yard) VARIANT 1

TOTAL SALEABLE AREA

SUITE = 1,034.61 SQ.FT.

YARD = 178.41 SQ.FT.

TOTAL = 1,213.02 SQ.FT.



List of unit numbers with this unit plan:

VIEWS

Ras Al Khor, Golf Course, Amenities
A708, A1308, A1908

Ras Al Khor, Golf Course
A3108, A3708, A4308, A5509

Disclaimer: 1. All dimensions are in metric, measured to wall finishes. 2. All materials, dimensions & drawings are approximate. 3. Information is subject to change without notice, at developer's absolute discretion. 4. Actual area may vary from the stated area. 5. Drawing are not to scale. 6. All images used are for illustrative purpose only and do not represent the actual size, features, specifications, fittings and furnishings. 7. The developer reserves the right to make revisions/ alterations, at its absolute discretion, without any liability whatsoever.

2 BEDROOM APARTMENT

TYPE P (with powder room + yard) VARIANT 1

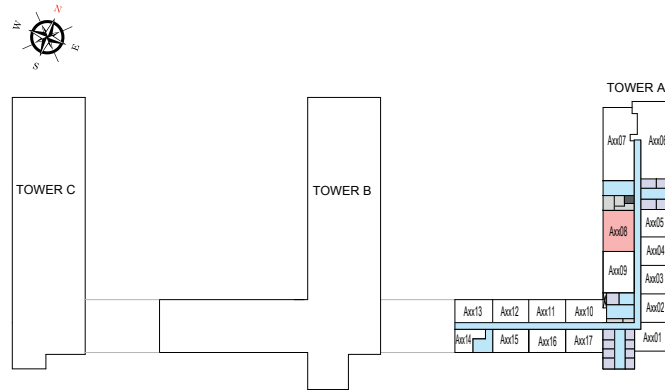
TOTAL SALEABLE AREA

SUITE = 1,034.61 SQ.FT.

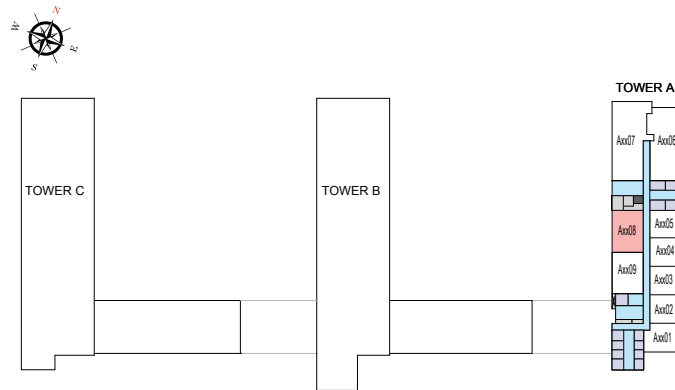
YARD = 178.41 SQ.FT.

TOTAL = 1,213.02 SQ.FT.

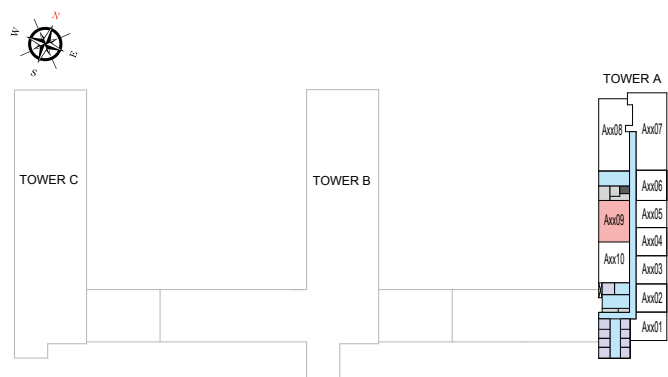
■ UNIT



LEVEL 07,19,31,43
ACCESS LEVEL



LEVEL 13,37



LEVEL 55

List of unit numbers with this unit plan:

VIEWS

Ras Al Khor, Golf Course, Amenities
A708, A1308, A1908

Ras Al Khor, Golf Course
A3108, A3708, A4308, A5509

Disclaimer: 1. All dimensions are in metric, measured to wall finishes. 2. All materials, dimensions & drawings are approximate. 3. Information is subject to change without notice, at developer's absolute discretion. 4. Actual area may vary from the stated area. 5. Drawing are not to scale. 6. All images used are for illustrative purpose only and do not represent the actual size, features, specifications, fittings and furnishings. 7. The developer reserves the right to make revisions/ alterations, at its absolute discretion, without any liability whatsoever.

3 BEDROOM APARTMENT

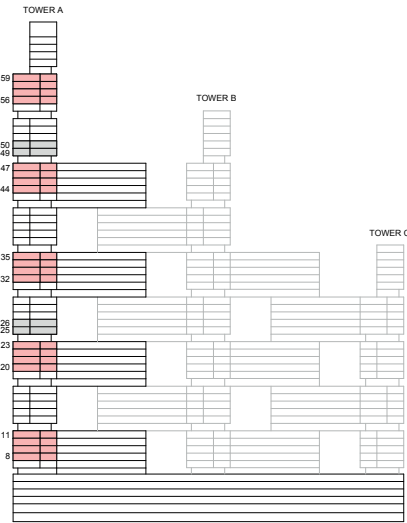
TYPE A (with maid room + balcony)

TOTAL SALEABLE AREA

SUITE = 1,642.57 SQ.FT.

BALCONY = 274.54 SQ.FT.

TOTAL = 1,917.11 SQ.FT.



List of unit numbers with this unit plan:

VIEWS

Downtown, Ras Al Khor, Creek, Golf Course, Water Body, Amenities

A807, A907, A1007, A1107, A2007, A2107, A2207, A2307

Downtown, Ras Al Khor, Creek, Golf Course, Water Body

A3207, A3307, A3407, A3507, A4407, A4507, A4607, A4707, A5608, A5708, A5808, A5908

Disclaimer: 1. All dimensions are in metric, measured to wall finishes. 2. All materials, dimensions & drawings are approximate. 3. Information is subject to change without notice, at developer's absolute discretion. 4. Actual area may vary from the stated area. 5. Drawing are not to scale. 6. All images used are for illustrative purpose only and do not represent the actual size, features, specifications, fittings and furnishings. 7. The developer reserves the right to make revisions/ alterations, at its absolute discretion, without any liability whatsoever.

3 BEDROOM APARTMENT

TYPE A (with maid room + balcony)

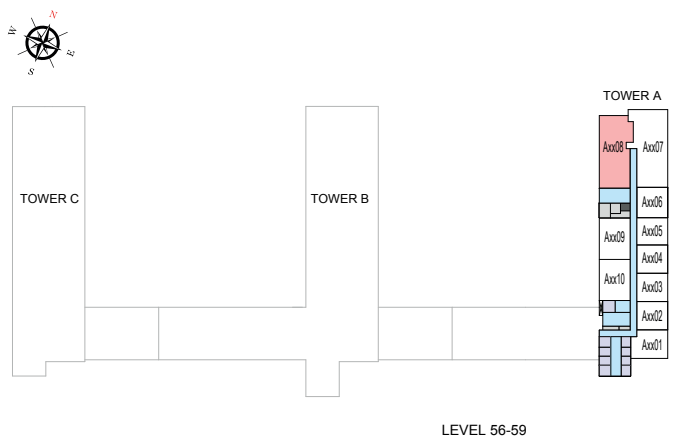
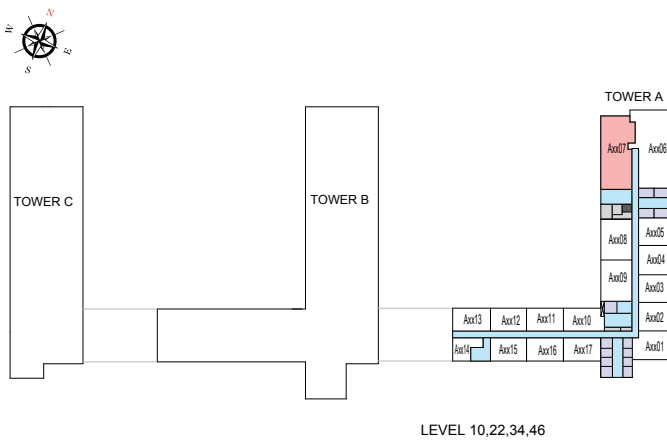
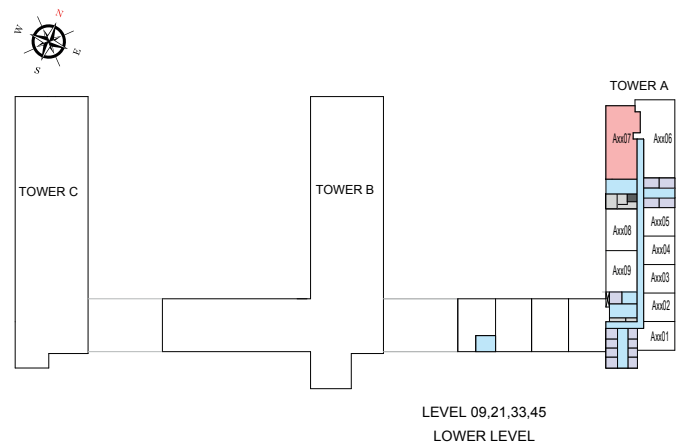
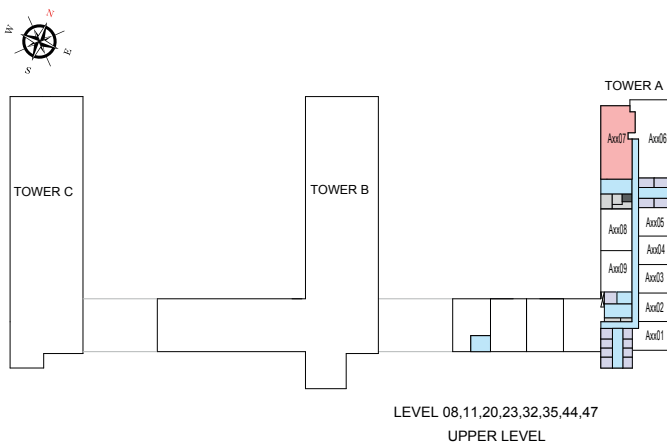
TOTAL SALEABLE AREA

SUITE = 1,642.57 SQ.FT.

BALCONY = 274.54 SQ.FT.

TOTAL = 1,917.11 SQ.FT.

■ UNIT



List of unit numbers with this unit plan:

VIEWS

Downtown, Ras Al Khor, Creek, Golf Course, Water Body, Amenities

A807, A907, A1007, A1107, A2007, A2107, A2207, A2307

Downtown, Ras Al Khor, Creek, Golf Course, Water Body

A3207, A3307, A3407, A3507, A4407, A4507, A4607, A4707, A5608, A5708, A5808, A5908

Disclaimer: 1. All dimensions are in metric, measured to wall finishes. 2. All materials, dimensions & drawings are approximate. 3. Information is subject to change without notice, at developer's absolute discretion. 4. Actual area may vary from the stated area. 5. Drawing are not to scale. 6. All images used are for illustrative purpose only and do not represent the actual size, features, specifications, fittings and furnishings. 7. The developer reserves the right to make revisions/ alterations, at its absolute discretion, without any liability whatsoever.

3 BEDROOM APARTMENT

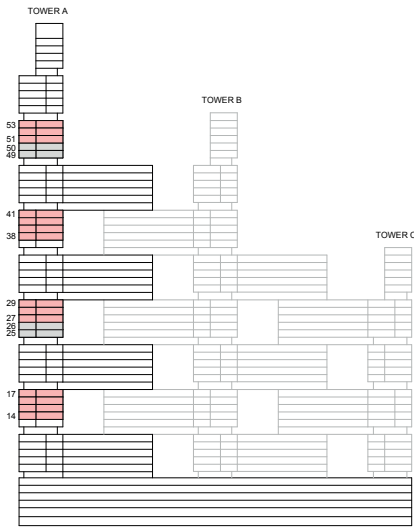
TYPE A (with maid room + balcony) VARIANT 1

TOTAL SALEABLE AREA

SUITE = 1,642.57 SQ.FT.

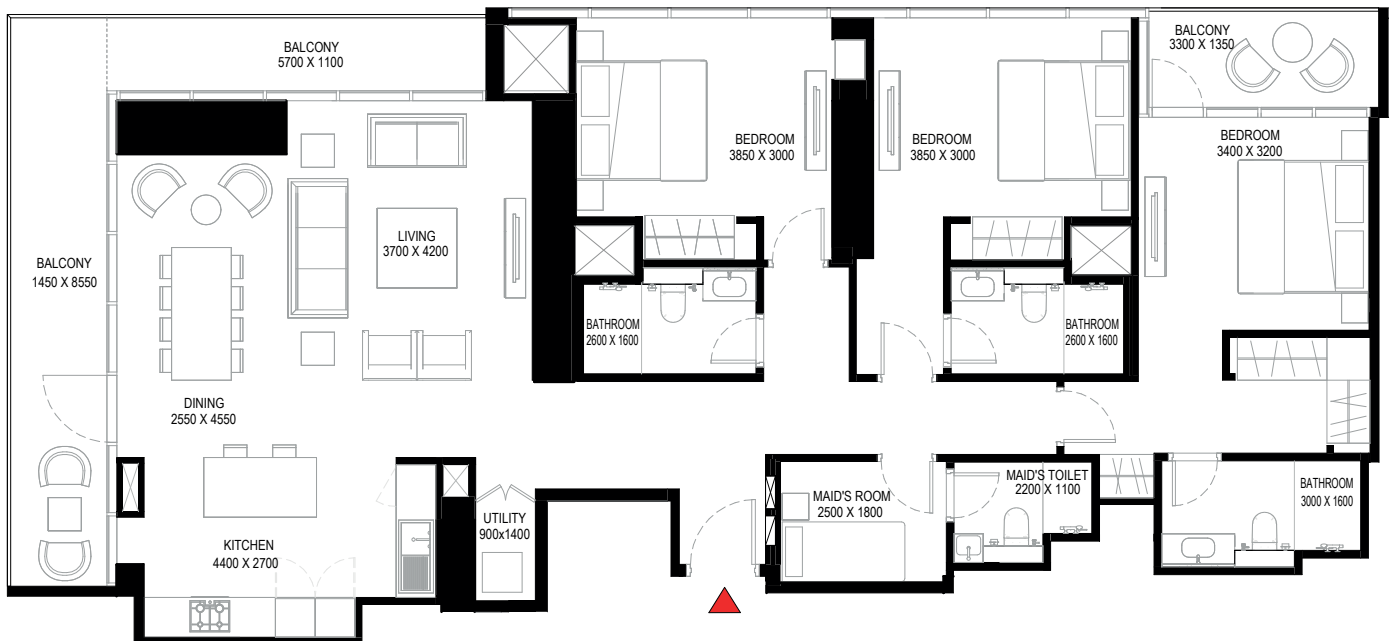
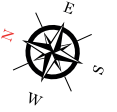
BALCONY = 274.54 SQ.FT.

TOTAL = 1,917.11 SQ.FT.



KEY ELEVATION

UNIT



List of unit numbers with this unit plan:

VIEWS

Ras Al Khor, Creek, Golf Course

A1406, A1506, A1606, A1706, A2706, A2806, A2906, A3806, A3906, A4006, A4106, A5107, A5207, A5307

Disclaimer: 1. All dimensions are in metric, measured to wall finishes. 2. All materials, dimensions & drawings are approximate. 3. Information is subject to change without notice, at developer's absolute discretion. 4. Actual area may vary from the stated area. 5. Drawing are not to scale. 6. All images used are for illustrative purpose only and do not represent the actual size, features, specifications, fittings and furnishings. 7. The developer reserves the right to make revisions/ alterations, at its absolute discretion, without any liability whatsoever.

3 BEDROOM APARTMENT

TYPE A (with maid room + balcony) VARIANT 1

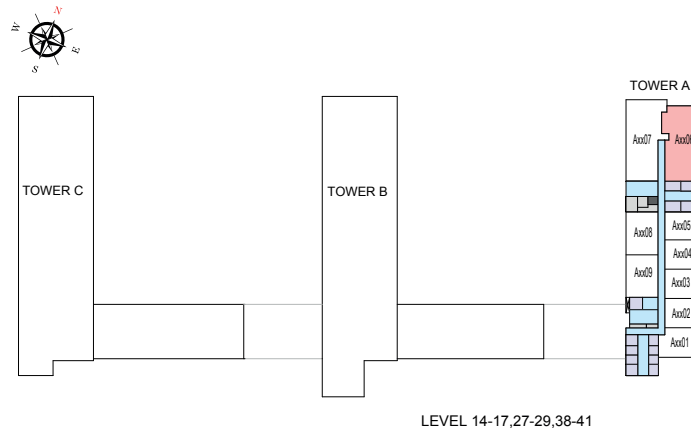
TOTAL SALEABLE AREA

SUITE = 1,642.57 SQ.FT.

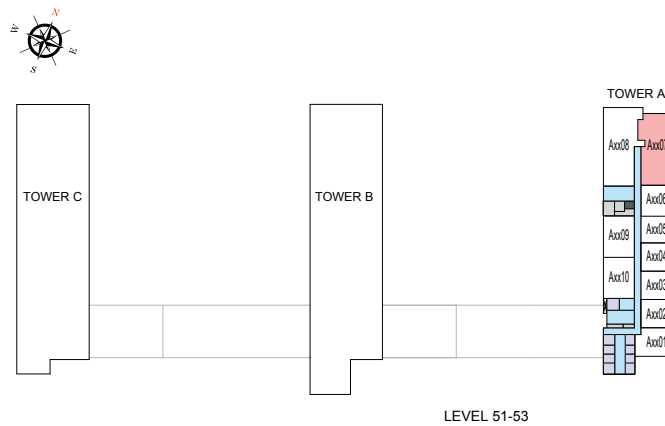
BALCONY = 274.54 SQ.FT.

TOTAL = 1,917.11 SQ.FT.

 UNIT



LEVEL 14-17,27-29,38-41



LEVEL 51-53

List of unit numbers with this unit plan:

VIEWS

Ras Al Khor, Creek, Golf Course

A1406, A1506, A1606, A1706, A2706, A2806, A2906, A3806, A3906, A4006, A4106, A5107, A5207, A5307

Disclaimer: 1. All dimensions are in metric, measured to wall finishes. 2. All materials, dimensions & drawings are approximate. 3. Information is subject to change without notice, at developer's absolute discretion. 4. Actual area may vary from the stated area. 5. Drawing are not to scale. 6. All images used are for illustrative purpose only and do not represent the actual size, features, specifications, fittings and furnishings. 7. The developer reserves the right to make revisions/ alterations, at its absolute discretion, without any liability whatsoever.

3 BEDROOM APARTMENT

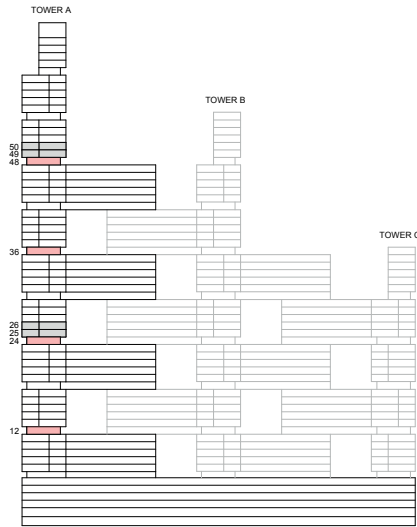
TYPE C (with store room and maid room + yard)

TOTAL SALEABLE AREA

SUITE = 1,708.66 SQ.FT.

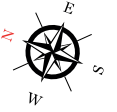
YARD = 782.88 SQ.FT.

TOTAL = 2,491.54 SQ.FT.



KEY ELEVATION

UNIT



List of unit numbers with this unit plan:

VIEWS

Downtown, Ras Al Khor, Creek, Golf Course, Water Body

A1206, A2406, A3606, A4806

Disclaimer: 1. All dimensions are in metric, measured to wall finishes. 2. All materials, dimensions & drawings are approximate. 3. Information is subject to change without notice, at developer's absolute discretion. 4. Actual area may vary from the stated area. 5. Drawing are not to scale. 6. All images used are for illustrative purpose only and do not represent the actual size, features, specifications, fittings and furnishings. 7. The developer reserves the right to make revisions/ alterations, at its absolute discretion, without any liability whatsoever.

3 BEDROOM APARTMENT

TYPE C (with store room and maid room + yard)

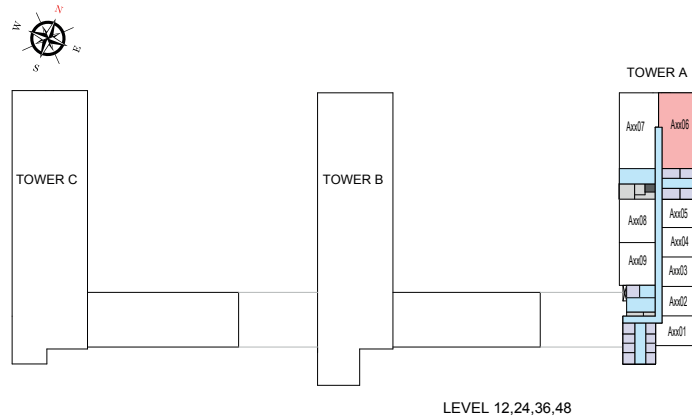
TOTAL SALEABLE AREA

SUITE = 1,708.66 SQ.FT.

YARD = 782.88 SQ.FT.

TOTAL = 2,491.54 SQ.FT.

 UNIT



LEVEL 12,24,36,48

List of unit numbers with this unit plan:

VIEWS

Downtown, Ras Al Khor, Creek, Golf Course, Water Body
A1206, A2406, A3606, A4806

Disclaimer: 1. All dimensions are in metric, measured to wall finishes. 2. All materials, dimensions & drawings are approximate. 3. Information is subject to change without notice, at developer's absolute discretion. 4. Actual area may vary from the stated area. 5. Drawing are not to scale. 6. All images used are for illustrative purpose only and do not represent the actual size, features, specifications, fittings and furnishings. 7. The developer reserves the right to make revisions/ alterations, at its absolute discretion, without any liability whatsoever.

3 BEDROOM APARTMENT

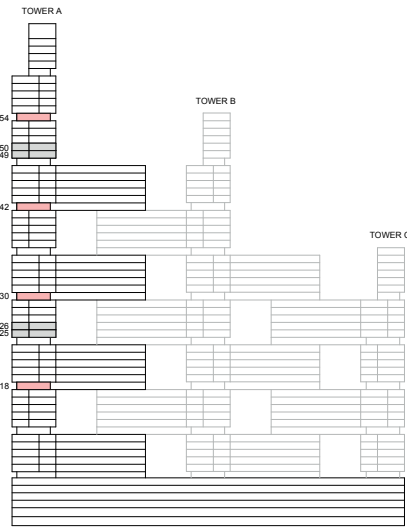
TYPE C (with store room and maid room + yard) VARIANT 1

TOTAL SALEABLE AREA

SUITE = 1,708.66 SQ.FT.

YARD = 782.88 SQ.FT.

TOTAL = 2,491.54 SQ.FT.



KEY ELEVATION



List of unit numbers with this unit plan:

VIEWS

Downtown, Ras Al Khor, Creek, Golf Course, Water Body, Amenities
A1807

Downtown, Ras Al Khor, Creek, Golf Course, Water Body
A3007, A4207, A5408

Disclaimer: 1. All dimensions are in metric, measured to wall finishes. 2. All materials, dimensions & drawings are approximate. 3. Information is subject to change without notice, at developer's absolute discretion. 4. Actual area may vary from the stated area. 5. Drawing are not to scale. 6. All images used are for illustrative purpose only and do not represent the actual size, features, specifications, fittings and furnishings. 7. The developer reserves the right to make revisions/ alterations, at its absolute discretion, without any liability whatsoever.

3 BEDROOM APARTMENT

TYPE C (with store room and maid room + yard) VARIANT 1

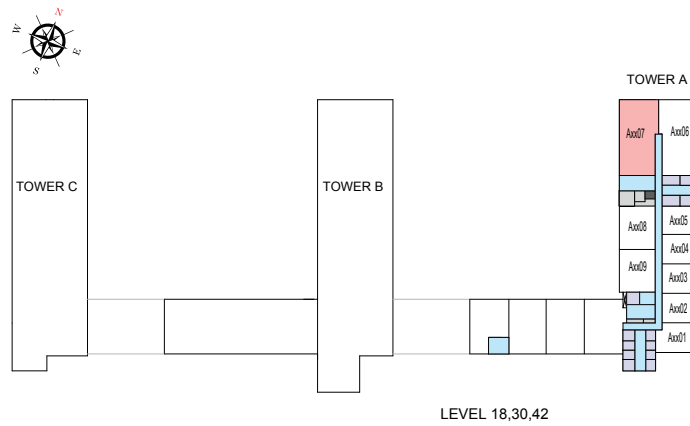
TOTAL SALEABLE AREA

SUITE = 1,708.66 SQ.FT.

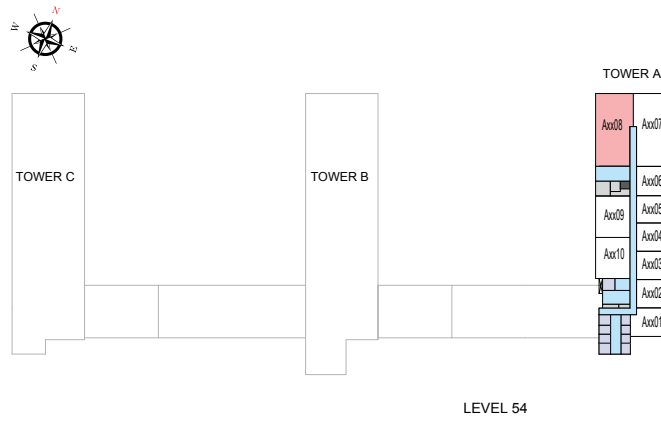
YARD = 782.88 SQ.FT.

TOTAL = 2,491.54 SQ.FT.

 UNIT



LEVEL 18,30,42



LEVEL 54

List of unit numbers with this unit plan:

VIEWS

Downtown, Ras Al Khor, Creek, Golf Course, Water Body, Amenities
A1807

Downtown, Ras Al Khor, Creek, Golf Course, Water Body
A3007, A4207, A5408

Disclaimer: 1. All dimensions are in metric, measured to wall finishes. 2. All materials, dimensions & drawings are approximate. 3. Information is subject to change without notice, at developer's absolute discretion. 4. Actual area may vary from the stated area. 5. Drawing are not to scale. 6. All images used are for illustrative purpose only and do not represent the actual size, features, specifications, fittings and furnishings. 7. The developer reserves the right to make revisions/ alterations, at its absolute discretion, without any liability whatsoever.

3 BEDROOM APARTMENT

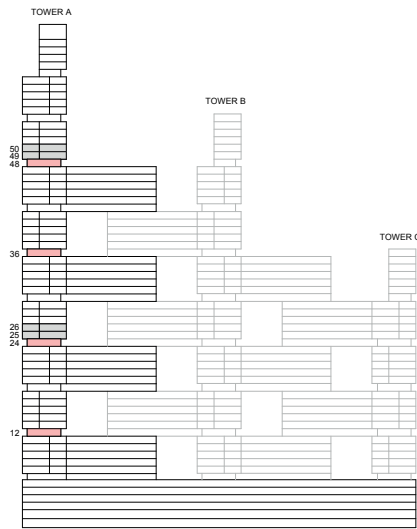
TYPE D (with store room and maid room + yard)

TOTAL SALEABLE AREA

SUITE = 1,708.66 SQ.FT.

YARD = 536.03 SQ.FT.

TOTAL = 2,244.69 SQ.FT.



KEY ELEVATION



List of unit numbers with this unit plan:

VIEWS

Downtown, Ras Al Khor, Creek, Golf Course, Water Body, Amenities
A1207, A2407

Downtown, Ras Al Khor, Creek, Golf Course, Water Body
A3607, A4807

Disclaimer: 1. All dimensions are in metric, measured to wall finishes. 2. All materials, dimensions & drawings are approximate. 3. Information is subject to change without notice, at developer's absolute discretion. 4. Actual area may vary from the stated area. 5. Drawing are not to scale. 6. All images used are for illustrative purpose only and do not represent the actual size, features, specifications, fittings and furnishings. 7. The developer reserves the right to make revisions/ alterations, at its absolute discretion, without any liability whatsoever.

3 BEDROOM APARTMENT

TYPE D (with store room and maid room + yard)

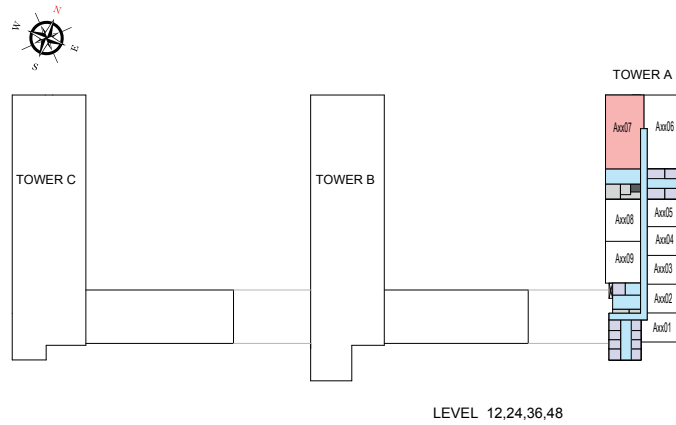
TOTAL SALEABLE AREA

SUITE = 1,708.66 SQ.FT.

YARD = 536.03 SQ.FT.

TOTAL = 2,244.69 SQ.FT.

 UNIT



List of unit numbers with this unit plan:

VIEWS

Downtown, Ras Al Khor, Creek, Golf Course, Water Body, Amenities
A1207, A2407

Downtown, Ras Al Khor, Creek, Golf Course, Water Body
A3607, A4807

Disclaimer: 1. All dimensions are in metric, measured to wall finishes. 2. All materials, dimensions & drawings are approximate. 3. Information is subject to change without notice, at developer's absolute discretion. 4. Actual area may vary from the stated area. 5. Drawing are not to scale. 6. All images used are for illustrative purpose only and do not represent the actual size, features, specifications, fittings and furnishings. 7. The developer reserves the right to make revisions/ alterations, at its absolute discretion, without any liability whatsoever.

3 BEDROOM APARTMENT

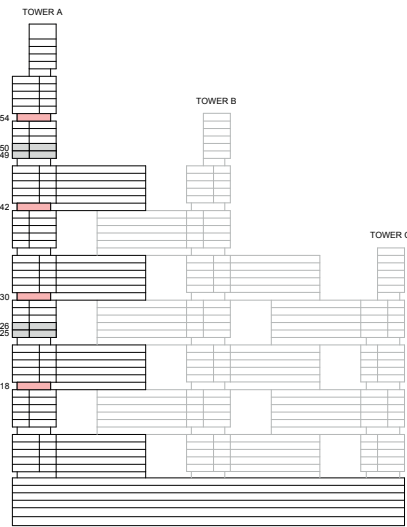
TYPE D (with store room and maid room + yard) VARIANT 1

TOTAL SALEABLE AREA

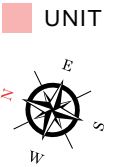
SUITE = 1,708.66 SQ.FT.

YARD = 536.03 SQ.FT.

TOTAL = 2,244.69 SQ.FT.



KEY ELEVATION



List of unit numbers with this unit plan:

VIEWS

Downtown, Ras Al Khor, Creek, Golf Course, Water Body
A1806, A3006, A4206, A5407

Disclaimer: 1. All dimensions are in metric, measured to wall finishes. 2. All materials, dimensions & drawings are approximate. 3. Information is subject to change without notice, at developer's absolute discretion. 4. Actual area may vary from the stated area. 5. Drawing are not to scale. 6. All images used are for illustrative purpose only and do not represent the actual size, features, specifications, fittings and furnishings. 7. The developer reserves the right to make revisions/ alterations, at its absolute discretion, without any liability whatsoever.

3 BEDROOM APARTMENT

TYPE D (with store room and maid room + yard) VARIANT 1

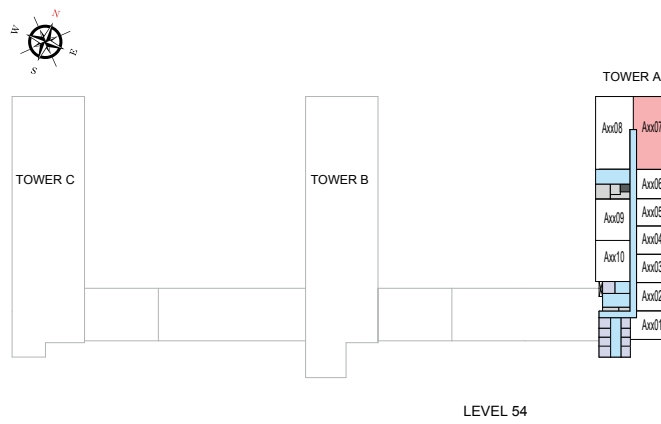
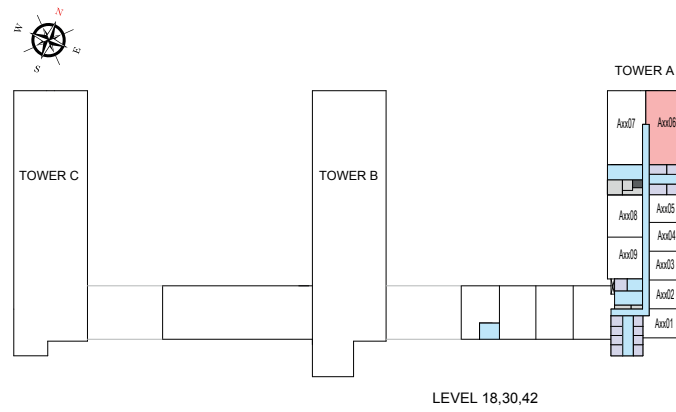
TOTAL SALEABLE AREA

SUITE = 1,708.66 SQ.FT.

YARD = 536.03 SQ.FT.

TOTAL = 2,244.69 SQ.FT.

 UNIT



List of unit numbers with this unit plan:

VIEWS

Downtown, Ras Al Khor, Creek, Golf Course, Water Body
A1806, A3006, A4206, A5407

Disclaimer: 1. All dimensions are in metric, measured to wall finishes. 2. All materials, dimensions & drawings are approximate. 3. Information is subject to change without notice, at developer's absolute discretion. 4. Actual area may vary from the stated area. 5. Drawing are not to scale. 6. All images used are for illustrative purpose only and do not represent the actual size, features, specifications, fittings and furnishings. 7. The developer reserves the right to make revisions/ alterations, at its absolute discretion, without any liability whatsoever.

3 BEDROOM APARTMENT

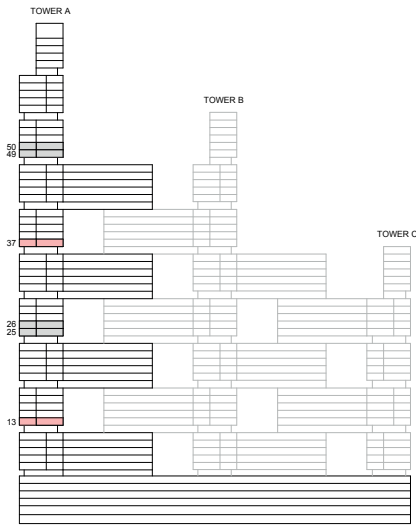
TYPE E (with maid room + yard)

TOTAL SALEABLE AREA

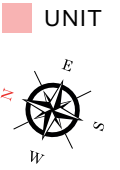
SUITE = 1,642.57 SQ.FT.

YARD = 539.66 SQ.FT.

TOTAL = 2,182.23 SQ.FT.



KEY ELEVATION



List of unit numbers with this unit plan:

VIEWS

Ras Al Khor, Creek, Golf Course
A1306, A3706

Disclaimer: 1. All dimensions are in metric, measured to wall finishes. 2. All materials, dimensions & drawings are approximate. 3. Information is subject to change without notice, at developer's absolute discretion. 4. Actual area may vary from the stated area. 5. Drawing are not to scale. 6. All images used are for illustrative purpose only and do not represent the actual size, features, specifications, fittings and furnishings. 7. The developer reserves the right to make revisions/ alterations, at its absolute discretion, without any liability whatsoever.

3 BEDROOM APARTMENT

TYPE E (with maid room + yard)

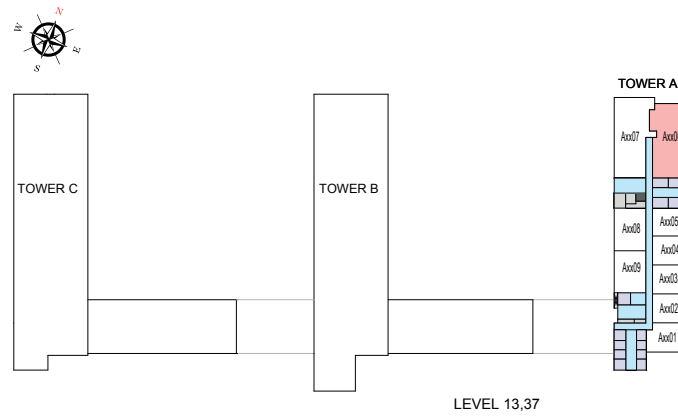
TOTAL SALEABLE AREA

SUITE = 1,642.57 SQ.FT.

YARD = 539.66 SQ.FT.

TOTAL = 2,182.23 SQ.FT.

 UNIT



List of unit numbers with this unit plan:

VIEWS

Ras Al Khor, Creek, Golf Course
A1306, A3706

Disclaimer: 1. All dimensions are in metric, measured to wall finishes. 2. All materials, dimensions & drawings are approximate. 3. Information is subject to change without notice, at developer's absolute discretion. 4. Actual area may vary from the stated area. 5. Drawing are not to scale. 6. All images used are for illustrative purpose only and do not represent the actual size, features, specifications, fittings and furnishings. 7. The developer reserves the right to make revisions/ alterations, at its absolute discretion, without any liability whatsoever.

3 BEDROOM APARTMENT

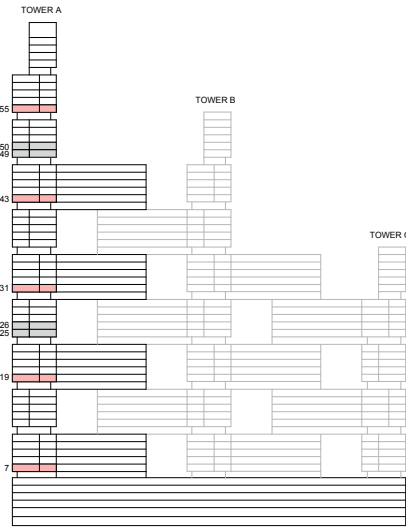
TYPE E (with maid room + yard) VARIANT 1

TOTAL SALEABLE AREA

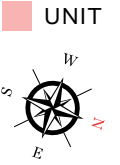
SUITE = 1,642.57 SQ.FT.

YARD = 539.66 SQ.FT.

TOTAL = 2,182.23 SQ.FT.



KEY ELEVATION



List of unit numbers with this unit plan:

VIEWS

Downtown, Ras Al Khor, Creek, Golf Course, Amenities
A707

Downtown, Ras Al Khor, Creek, Golf Course, Water Body, Amenities
A1907

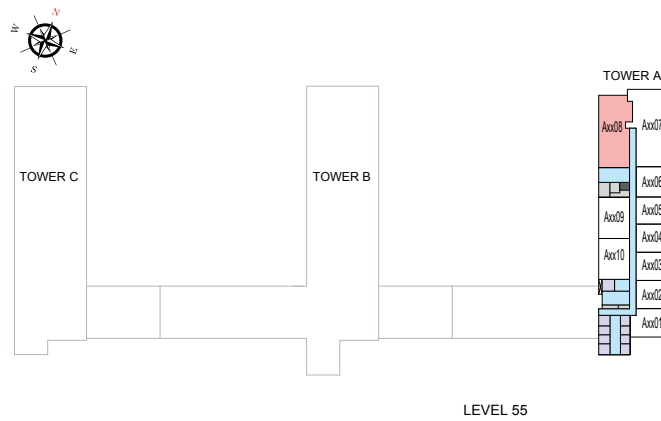
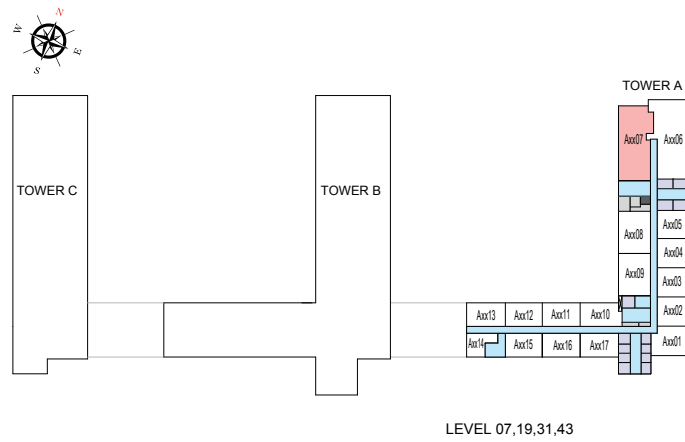
Downtown, Ras Al Khor, Creek, Golf Course, Water Body
A3107, A4307, A5508

Disclaimer: 1. All dimensions are in metric, measured to wall finishes. 2. All materials, dimensions & drawings are approximate. 3. Information is subject to change without notice, at developer's absolute discretion. 4. Actual area may vary from the stated area. 5. Drawing are not to scale. 6. All images used are for illustrative purpose only and do not represent the actual size, features, specifications, fittings and furnishings. 7. The developer reserves the right to make revisions/ alterations, at its absolute discretion, without any liability whatsoever.

3 BEDROOM APARTMENT
TYPE E (with maid room + yard) VARIANT 1

TOTAL SALEABLE AREA
 SUITE = 1,642.57 SQ.FT.
 YARD = 539.66 SQ.FT.
 TOTAL = 2,182.23 SQ.FT.

UNIT



List of unit numbers with this unit plan:

VIEWS

Downtown, Ras Al Khor, Creek, Golf Course, Amenities
 A707

Downtown, Ras Al Khor, Creek, Golf Course, Water Body, Amenities
 A1907

Downtown, Ras Al Khor, Creek, Golf Course, Water Body
 A3107, A4307, A5508

Disclaimer: 1. All dimensions are in metric, measured to wall finishes. 2. All materials, dimensions & drawings are approximate. 3. Information is subject to change without notice, at developer's absolute discretion. 4. Actual area may vary from the stated area. 5. Drawing are not to scale. 6. All images used are for illustrative purpose only and do not represent the actual size, features, specifications, fittings and furnishings. 7. The developer reserves the right to make revisions/ alterations, at its absolute discretion, without any liability whatsoever.

4 BEDROOM APARTMENT

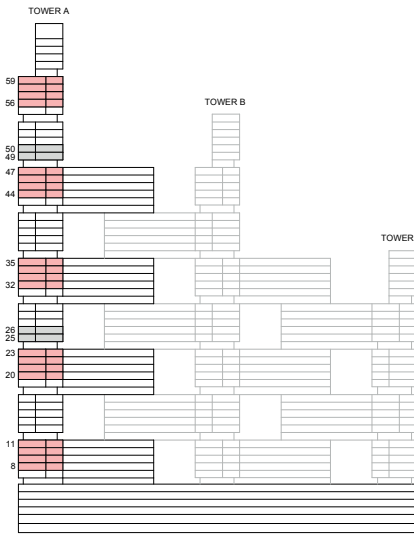
TYPE A (with store room, maid room and powder room + balcony)

TOTAL SALEABLE AREA

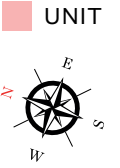
SUITE = 2,080.88 SQ.FT.

BALCONY = 196.34 SQ.FT.

TOTAL = 2,277.22 SQ.FT.



KEY ELEVATION



List of unit numbers with this unit plan:

VIEWS

Downtown, Ras Al Khor, Creek, Golf Course, Water Body

A806, A906, A1006, A1106, A2006, A2106, A2206, A2306, A3206, A3306, A3406, A3506, A4406, A4506, A4606, A4706, A5607, A5707, A5807, A5907

Disclaimer: 1. All dimensions are in metric, measured to wall finishes. 2. All materials, dimensions & drawings are approximate. 3. Information is subject to change without notice, at developer's absolute discretion. 4. Actual area may vary from the stated area. 5. Drawing are not to scale. 6. All images used are for illustrative purpose only and do not represent the actual size, features, specifications, fittings and furnishings. 7. The developer reserves the right to make revisions/ alterations, at its absolute discretion, without any liability whatsoever.

4 BEDROOM APARTMENT

TYPE A (with store room, maid room and powder room + balcony)

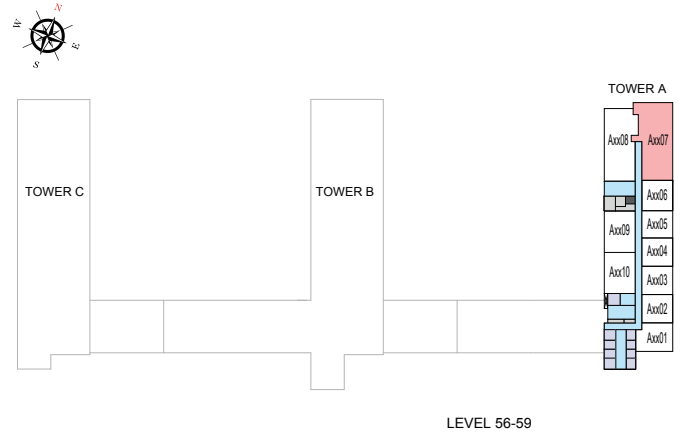
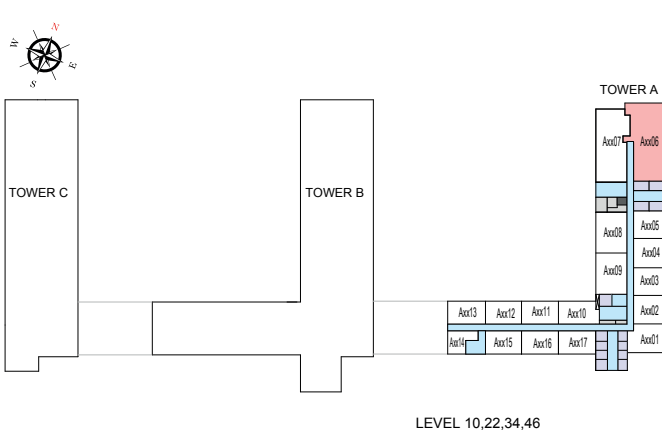
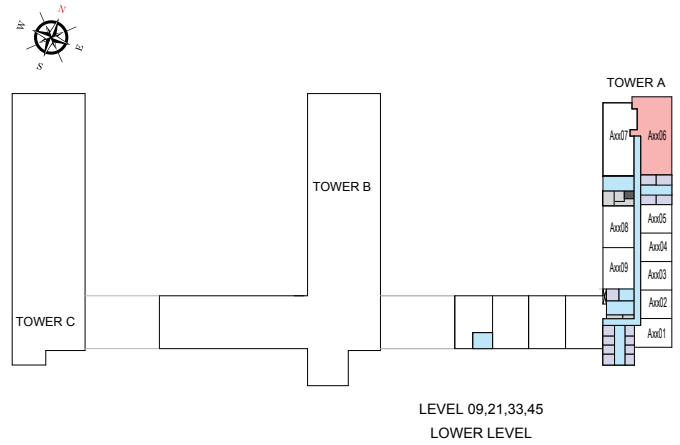
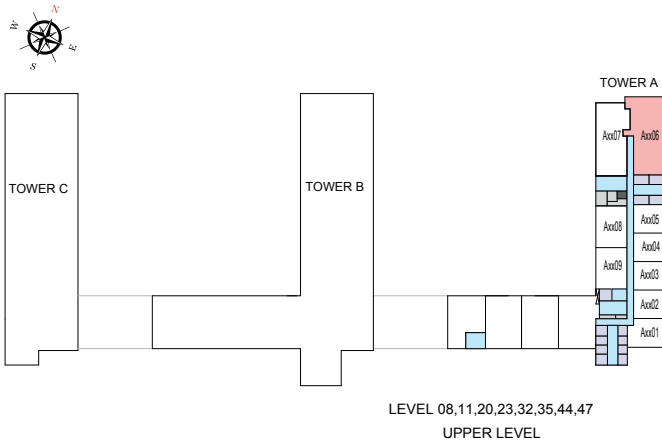
TOTAL SALEABLE AREA

SUITE = 2,080.88 SQ.FT.

BALCONY = 196.34 SQ.FT.

TOTAL = 2,277.22 SQ.FT.

UNIT



List of unit numbers with this unit plan:

VIEWS

Downtown, Ras Al Khor, Creek, Golf Course, Water Body

A806, A906, A1006, A1106, A2006, A2106, A2206, A2306, A3206, A3306, A3406, A3506, A4406, A4506, A4606, A4706, A5607, A5707, A5807, A5907

Disclaimer: 1. All dimensions are in metric, measured to wall finishes. 2. All materials, dimensions & drawings are approximate. 3. Information is subject to change without notice, at developer's absolute discretion. 4. Actual area may vary from the stated area. 5. Drawing are not to scale. 6. All images used are for illustrative purpose only and do not represent the actual size, features, specifications, fittings and furnishings. 7. The developer reserves the right to make revisions/ alterations, at its absolute discretion, without any liability whatsoever.

4 BEDROOM APARTMENT

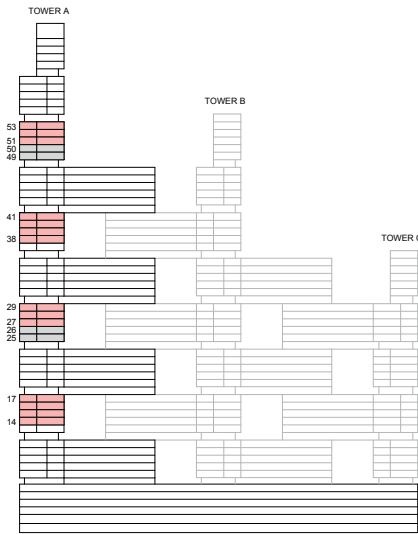
TYPE A (with store room, maid room and powder room + balcony) VARIANT 1

TOTAL SALEABLE AREA

SUITE = 2,080.88 SQ.FT.

BALCONY = 196.34 SQ.FT.

TOTAL = 2,277.22 SQ.FT.



KEY ELEVATION



List of unit numbers with this unit plan:

VIEWS

Downtown, Ras Al Khor, Creek, Golf Course, Water Body, Amenities

A1407, A1507, A1607, A1707

Downtown, Ras Al Khor, Creek, Golf Course, Water Body

A2707, A2807, A2907, A3807, A3907, A4007, A4107, A5108, A5208, A5308

Disclaimer: 1. All dimensions are in metric, measured to wall finishes. 2. All materials, dimensions & drawings are approximate. 3. Information is subject to change without notice, at developer's absolute discretion. 4. Actual area may vary from the stated area. 5. Drawing are not to scale. 6. All images used are for illustrative purpose only and do not represent the actual size, features, specifications, fittings and furnishings. 7. The developer reserves the right to make revisions/ alterations, at its absolute discretion, without any liability whatsoever.

4 BEDROOM APARTMENT

TYPE A (with store room, maid room and powder room + balcony) VARIANT 1

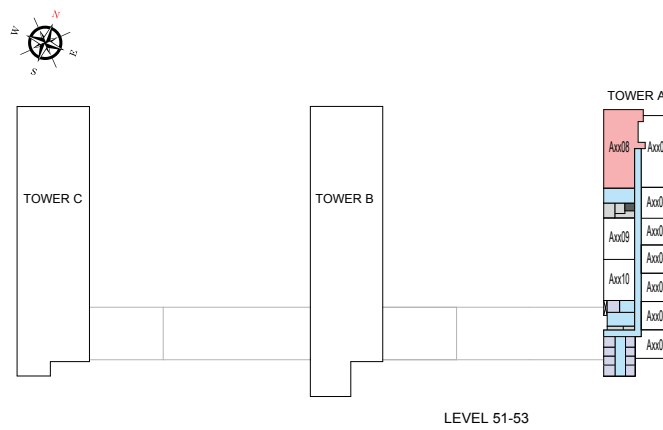
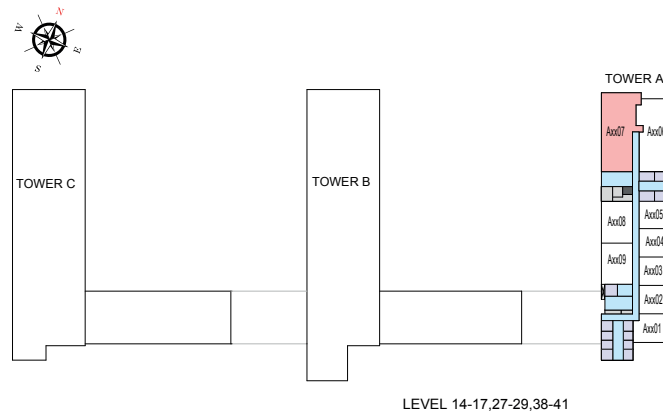
TOTAL SALEABLE AREA

SUITE = 2,080.88 SQ.FT.

BALCONY = 196.34 SQ.FT.

TOTAL = 2,277.22 SQ.FT.

UNIT



List of unit numbers with this unit plan:

VIEWS

Downtown, Ras Al Khor, Creek, Golf Course, Water Body, Amenities

A1407, A1507, A1607, A1707

Downtown, Ras Al Khor, Creek, Golf Course, Water Body

A2707, A2807, A2907, A3807, A3907, A4007, A4107, A5108, A5208, A5308

Disclaimer: 1. All dimensions are in metric, measured to wall finishes. 2. All materials, dimensions & drawings are approximate. 3. Information is subject to change without notice, at developer's absolute discretion. 4. Actual area may vary from the stated area. 5. Drawing are not to scale. 6. All images used are for illustrative purpose only and do not represent the actual size, features, specifications, fittings and furnishings. 7. The developer reserves the right to make revisions/ alterations, at its absolute discretion, without any liability whatsoever.

4 BEDROOM APARTMENT

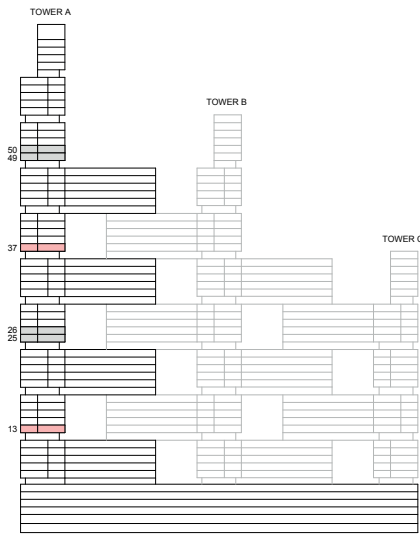
TYPE B (with store room, maid room and powder room + yard)

TOTAL SALEABLE AREA

SUITE = 2,084.43 SQ.FT.

YARD = 477.92 SQ.FT.

TOTAL = 2,562.35 SQ.FT.



KEY ELEVATION



List of unit numbers with this unit plan:

VIEWS

Downtown, Ras Al Khor, Creek, Golf Course, Water Body, Amenities

A1307

Downtown, Ras Al Khor, Creek, Golf Course, Water Body

A3707

Disclaimer: 1. All dimensions are in metric, measured to wall finishes. 2. All materials, dimensions & drawings are approximate. 3. Information is subject to change without notice, at developer's absolute discretion. 4. Actual area may vary from the stated area. 5. Drawing are not to scale. 6. All images used are for illustrative purpose only and do not represent the actual size, features, specifications, fittings and furnishings. 7. The developer reserves the right to make revisions/ alterations, at its absolute discretion, without any liability whatsoever.

4 BEDROOM APARTMENT

TYPE B (with store room, maid room and powder room + yard)

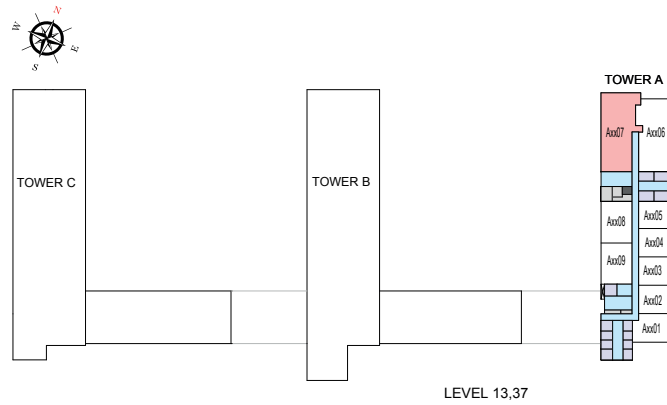
TOTAL SALEABLE AREA

SUITE = 2,084.43 SQ.FT.

YARD = 477.92 SQ.FT.

TOTAL = 2,562.35 SQ.FT.

 UNIT



List of unit numbers with this unit plan:

VIEWS

Downtown, Ras Al Khor, Creek, Golf Course, Water Body, Amenities

A1307

Downtown, Ras Al Khor, Creek, Golf Course, Water Body

A3707

Disclaimer: 1. All dimensions are in metric, measured to wall finishes. 2. All materials, dimensions & drawings are approximate. 3. Information is subject to change without notice, at developer's absolute discretion. 4. Actual area may vary from the stated area. 5. Drawing are not to scale. 6. All images used are for illustrative purpose only and do not represent the actual size, features, specifications, fittings and furnishings. 7. The developer reserves the right to make revisions/ alterations, at its absolute discretion, without any liability whatsoever.

4 BEDROOM APARTMENT

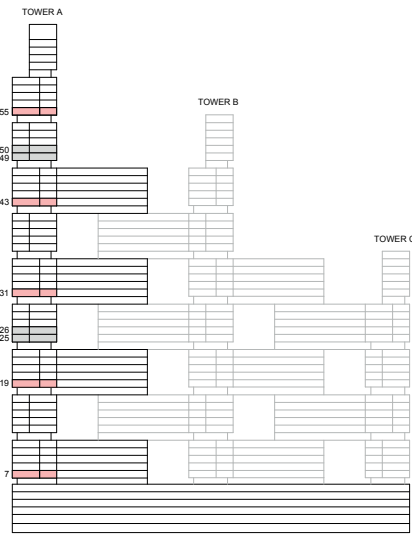
TYPE B (with store room, maid room and powder room + yard) VARIANT 1

TOTAL SALEABLE AREA

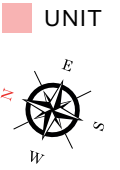
SUITE = 2,084.43 SQ.FT.

YARD = 477.92 SQ.FT.

TOTAL = 2,562.35 SQ.FT.



KEY ELEVATION



List of unit numbers with this unit plan:

VIEWS

Downtown, Ras Al Khor, Creek, Golf Course
A706

Downtown, Ras Al Khor, Creek, Golf Course, Water Body
A1906, A3106, A4306, A5507

Disclaimer: 1. All dimensions are in metric, measured to wall finishes. 2. All materials, dimensions & drawings are approximate. 3. Information is subject to change without notice, at developer's absolute discretion. 4. Actual area may vary from the stated area. 5. Drawing are not to scale. 6. All images used are for illustrative purpose only and do not represent the actual size, features, specifications, fittings and furnishings. 7. The developer reserves the right to make revisions/ alterations, at its absolute discretion, without any liability whatsoever.

4 BEDROOM APARTMENT

TYPE B (with store room, maid room and powder room + yard) VARIANT 1

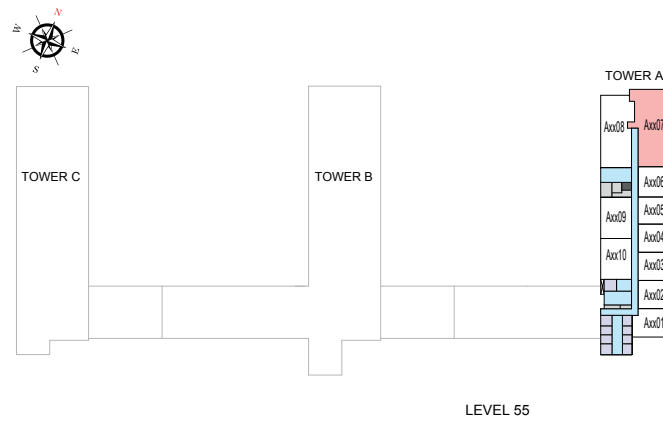
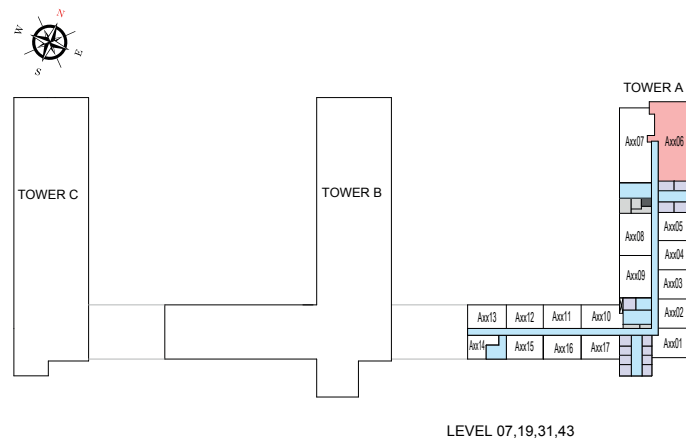
TOTAL SALEABLE AREA

SUITE = 2,084.43 SQ.FT.

YARD = 477.92 SQ.FT.

TOTAL = 2,562.35 SQ.FT.

■ UNIT



List of unit numbers with this unit plan:

VIEWS

Downtown, Ras Al Khor, Creek, Golf Course
A706

Downtown, Ras Al Khor, Creek, Golf Course, Water Body
A1906, A3106, A4306, A5507

Disclaimer: 1. All dimensions are in metric, measured to wall finishes. 2. All materials, dimensions & drawings are approximate. 3. Information is subject to change without notice, at developer's absolute discretion. 4. Actual area may vary from the stated area. 5. Drawing are not to scale. 6. All images used are for illustrative purpose only and do not represent the actual size, features, specifications, fittings and furnishings. 7. The developer reserves the right to make revisions/ alterations, at its absolute discretion, without any liability whatsoever.

2 BEDROOM DUPLEX APARTMENT

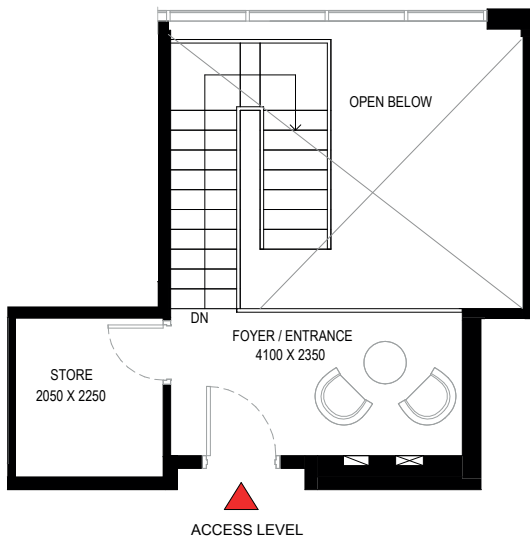
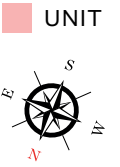
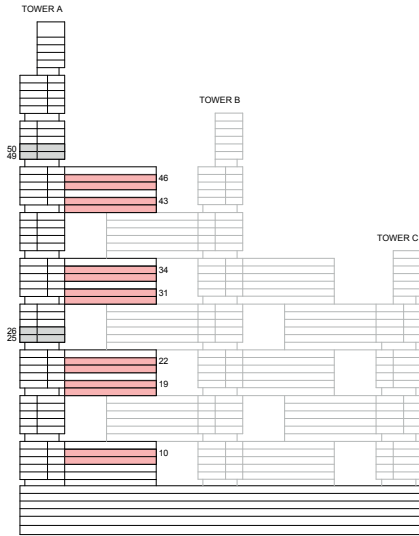
TYPE A (with store room, maid room and powder room + balcony)

TOTAL SALEABLE AREA

SUITE = 1,701.76 SQ.FT.

BALCONY = 178.96 SQ.FT.

TOTAL = 1,880.72 SQ.FT.



List of unit numbers with this unit plan:

VIEWS

Ras Al Khor, Golf Course, Amenities
A1014, A1914, A2214

Ras Al Khor, Golf Course
A3114, A3414, A4314, A4614

LOWER LEVEL

Disclaimer: 1. All dimensions are in metric, measured to wall finishes. 2. All materials, dimensions & drawings are approximate. 3. Information is subject to change without notice, at developer's absolute discretion. 4. Actual area may vary from the stated area. 5. Drawing are not to scale. 6. All images used are for illustrative purpose only and do not represent the actual size, features, specifications, fittings and furnishings. 7. The developer reserves the right to make revisions/ alterations, at its absolute discretion, without any liability whatsoever.

2 BEDROOM DUPLEX APARTMENT

TYPE A (with store room, maid room and powder room + balcony)

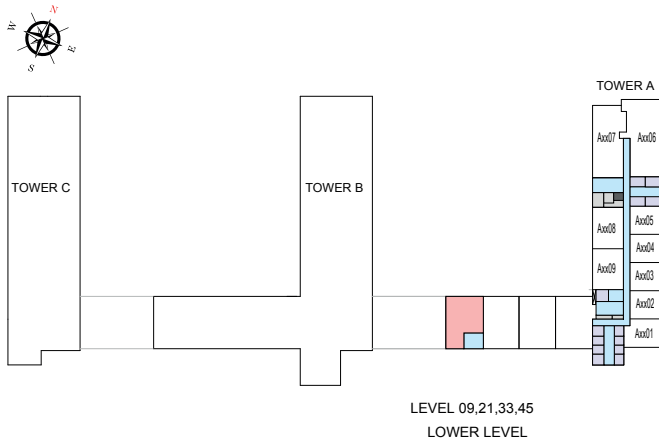
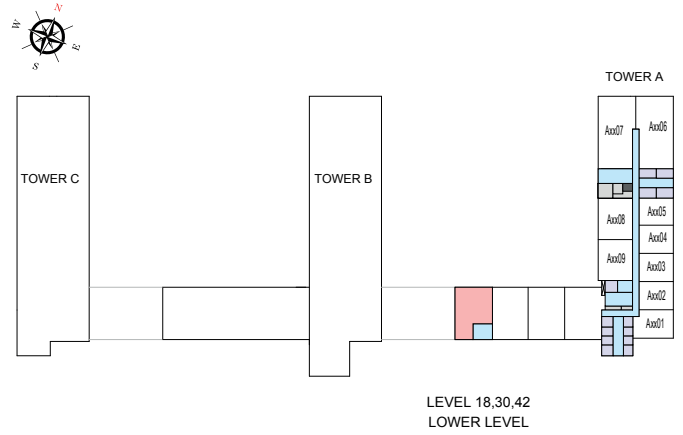
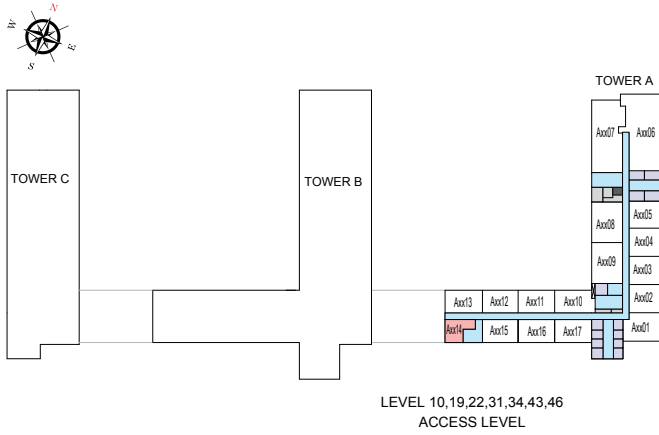
TOTAL SALEABLE AREA

SUITE = 1,701.76 SQ.FT.

BALCONY = 178.96 SQ.FT.

TOTAL = 1,880.72 SQ.FT.

 UNIT



List of unit numbers with this unit plan:

VIEWS

Ras Al Khor, Golf Course, Amenities

A1014, A1914, A2214

Ras Al Khor, Golf Course

A3114, A3414, A4314, A4614

Disclaimer: 1. All dimensions are in metric, measured to wall finishes. 2. All materials, dimensions & drawings are approximate. 3. Information is subject to change without notice, at developer's absolute discretion. 4. Actual area may vary from the stated area. 5. Drawing are not to scale. 6. All images used are for illustrative purpose only and do not represent the actual size, features, specifications, fittings and furnishings. 7. The developer reserves the right to make revisions/ alterations, at its absolute discretion, without any liability whatsoever.

4 BEDROOM DUPLEX APARTMENT

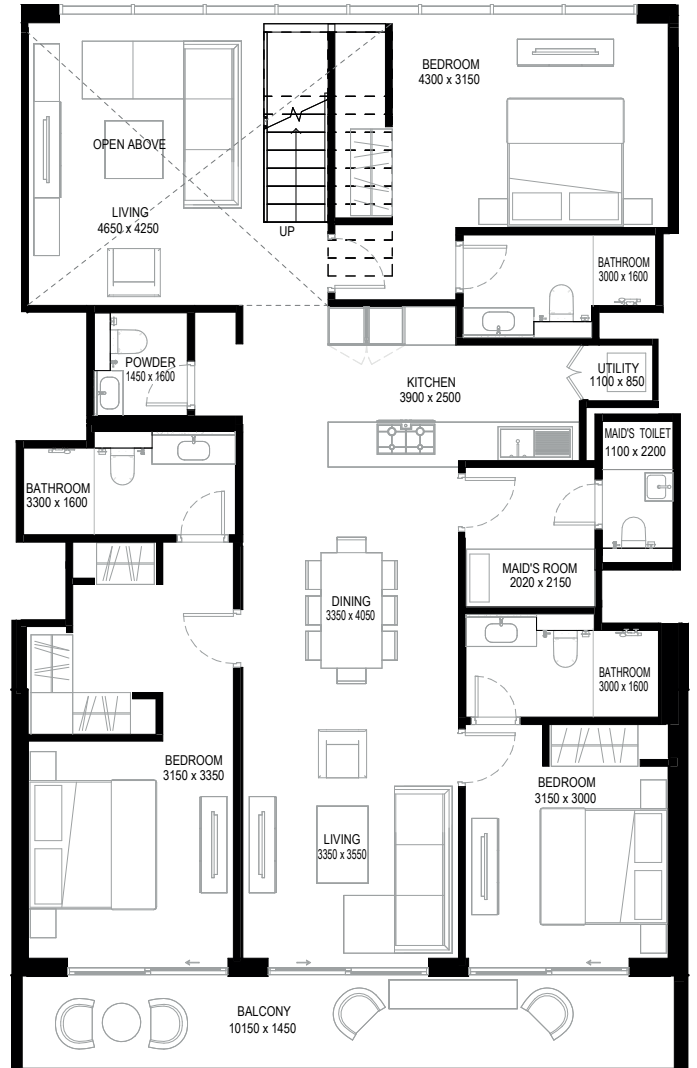
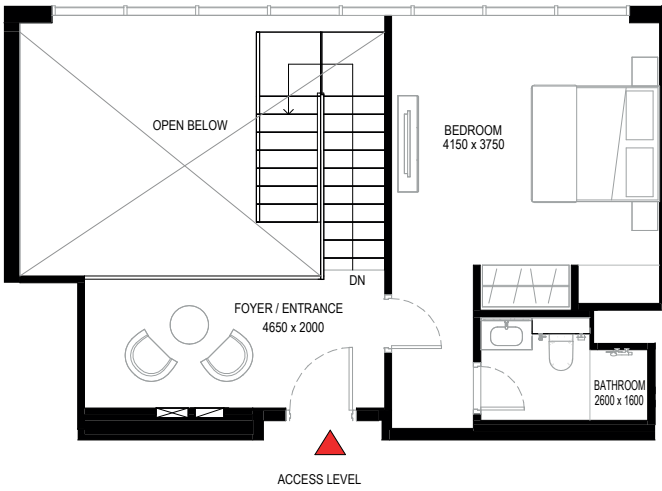
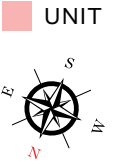
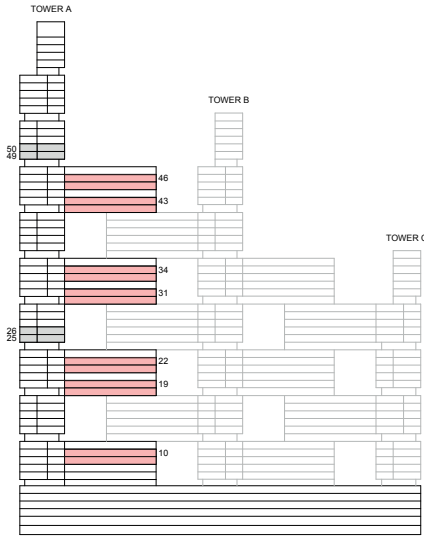
TYPE A (with maid room and powder room + balcony)

TOTAL SALEABLE AREA

SUITE = 2,176.53 SQ.FT.

BALCONY = 176.25 SQ.FT.

TOTAL = 2,352.78 SQ.FT.



List of unit numbers with this unit plan:

VIEWS

Ras Al Khor, Golf Course, Amenities
A1015, A1915, A2215

Ras Al Khor, Golf Course
A3115, A3415, A4315, A4615

LOWER LEVEL

Disclaimer: 1. All dimensions are in metric, measured to wall finishes. 2. All materials, dimensions & drawings are approximate. 3. Information is subject to change without notice, at developer's absolute discretion. 4. Actual area may vary from the stated area. 5. Drawing are not to scale. 6. All images used are for illustrative purpose only and do not represent the actual size, features, specifications, fittings and furnishings. 7. The developer reserves the right to make revisions/ alterations, at its absolute discretion, without any liability whatsoever.

4 BEDROOM DUPLEX APARTMENT
TYPE A (with maid room and powder room + balcony)

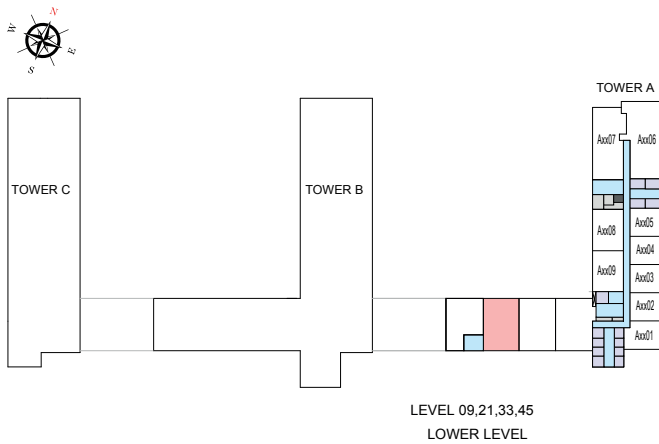
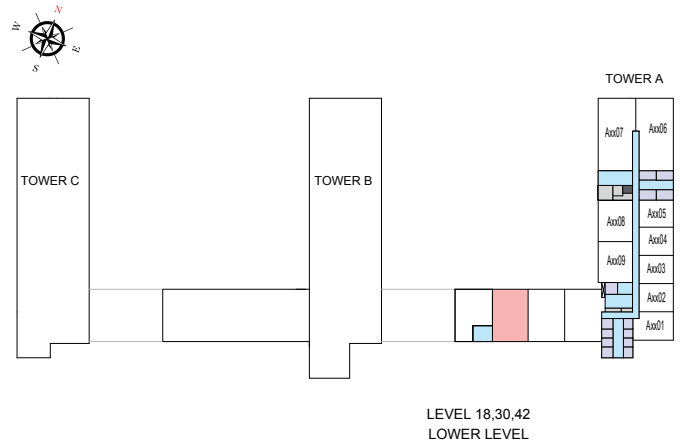
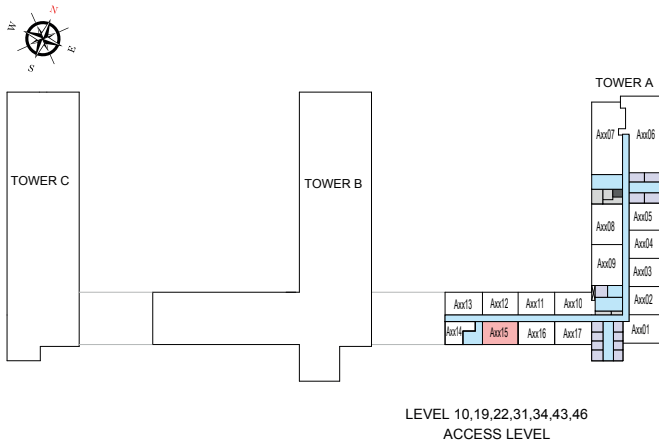
TOTAL SALEABLE AREA

SUITE = 2,176.53 SQ.FT.

BALCONY = 176.25 SQ.FT.

TOTAL = 2,352.78 SQ.FT.

 UNIT



List of unit numbers with this unit plan:

VIEWS

Ras Al Khor, Golf Course, Amenities
A1015, A1915, A2215

Ras Al Khor, Golf Course
A3115, A3415, A4315, A4615

Disclaimer: 1. All dimensions are in metric, measured to wall finishes. 2. All materials, dimensions & drawings are approximate. 3. Information is subject to change without notice, at developer's absolute discretion. 4. Actual area may vary from the stated area. 5. Drawing are not to scale. 6. All images used are for illustrative purpose only and do not represent the actual size, features, specifications, fittings and furnishings. 7. The developer reserves the right to make revisions/ alterations, at its absolute discretion, without any liability whatsoever.

4 BEDROOM DUPLEX APARTMENT

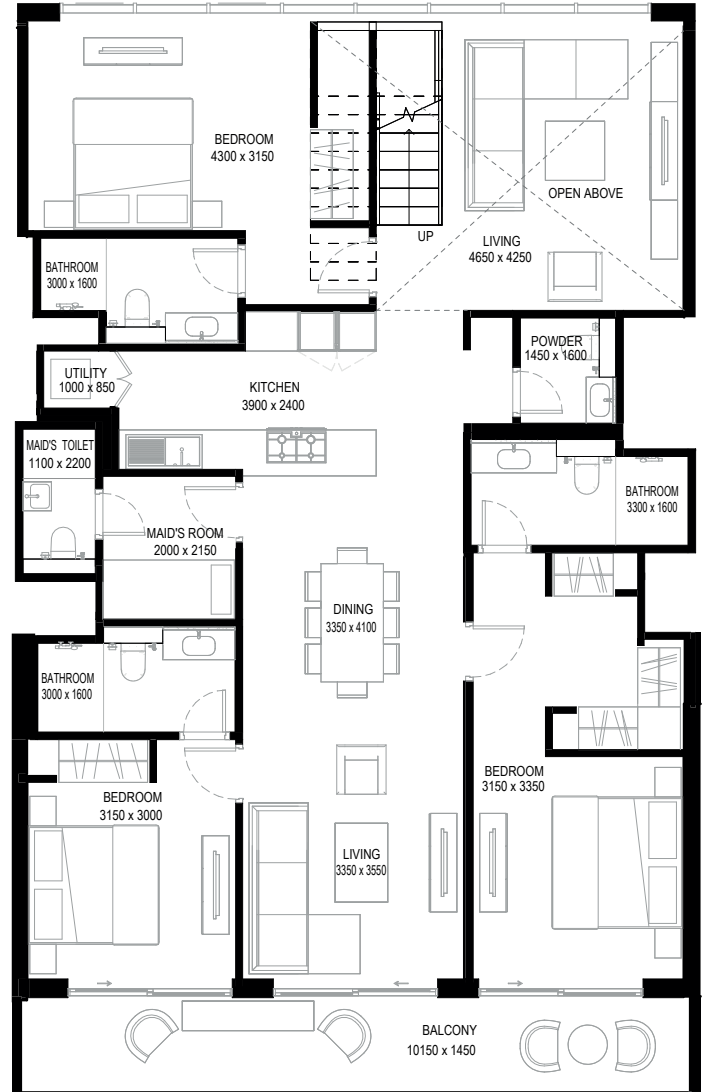
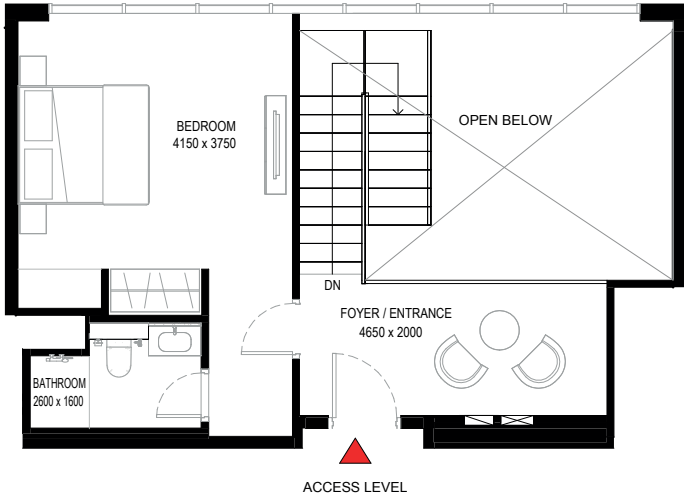
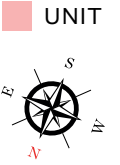
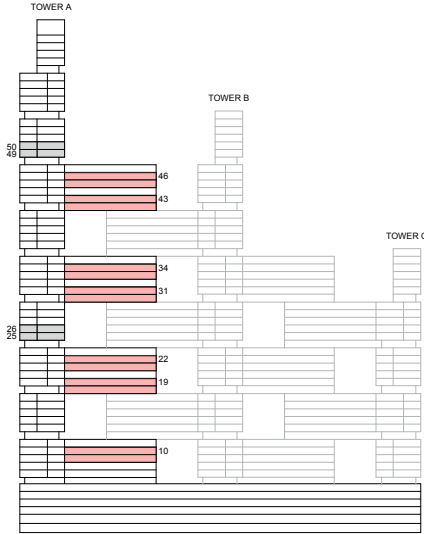
TYPE A (with maid room and powder room + balcony) VARIANT 1

TOTAL SALEABLE AREA

SUITE = 2,172.85 SQ.FT.

BALCONY = 176.25 SQ.FT.

TOTAL = 2,349.10 SQ.FT.



List of unit numbers with this unit plan:

VIEWS

Ras Al Khor, Golf Course, Amenities
A1016, A1916, A2216

Ras Al Khor, Golf Course
A3116, A3416, A4316, A4616

Disclaimer: 1. All dimensions are in metric, measured to wall finishes. 2. All materials, dimensions & drawings are approximate. 3. Information is subject to change without notice, at developer's absolute discretion. 4. Actual area may vary from the stated area. 5. Drawing are not to scale. 6. All images used are for illustrative purpose only and do not represent the actual size, features, specifications, fittings and furnishings. 7. The developer reserves the right to make revisions/ alterations, at its absolute discretion, without any liability whatsoever.

4 BEDROOM DUPLEX APARTMENT

TYPE A (with maid room and powder room + balcony) VARIANT 1

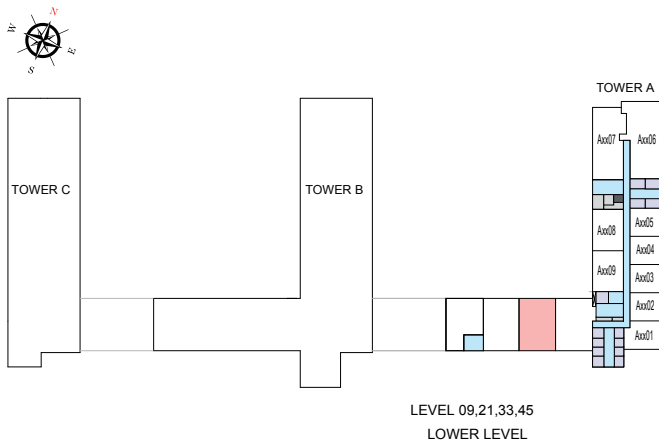
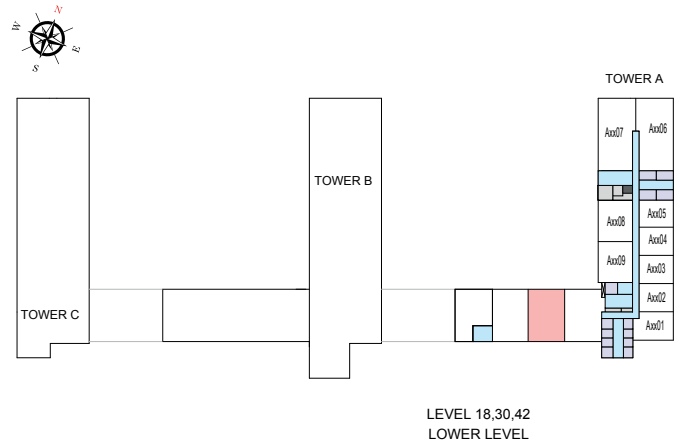
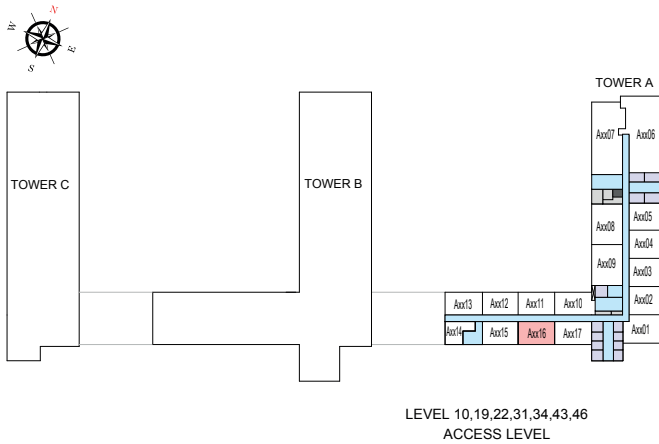
TOTAL SALEABLE AREA

SUITE = 2,172.85 SQ.FT.

BALCONY = 176.25 SQ.FT.

TOTAL = 2,349.10 SQ.FT.

 UNIT



List of unit numbers with this unit plan:

VIEWS

Ras Al Khor, Golf Course, Amenities

A1016, A1916, A2216

Ras Al Khor, Golf Course

A3116, A3416, A4316, A4616

Disclaimer: 1. All dimensions are in metric, measured to wall finishes. 2. All materials, dimensions & drawings are approximate. 3. Information is subject to change without notice, at developer's absolute discretion. 4. Actual area may vary from the stated area. 5. Drawing are not to scale. 6. All images used are for illustrative purpose only and do not represent the actual size, features, specifications, fittings and furnishings. 7. The developer reserves the right to make revisions/ alterations, at its absolute discretion, without any liability whatsoever.

4 BEDROOM DUPLEX APARTMENT

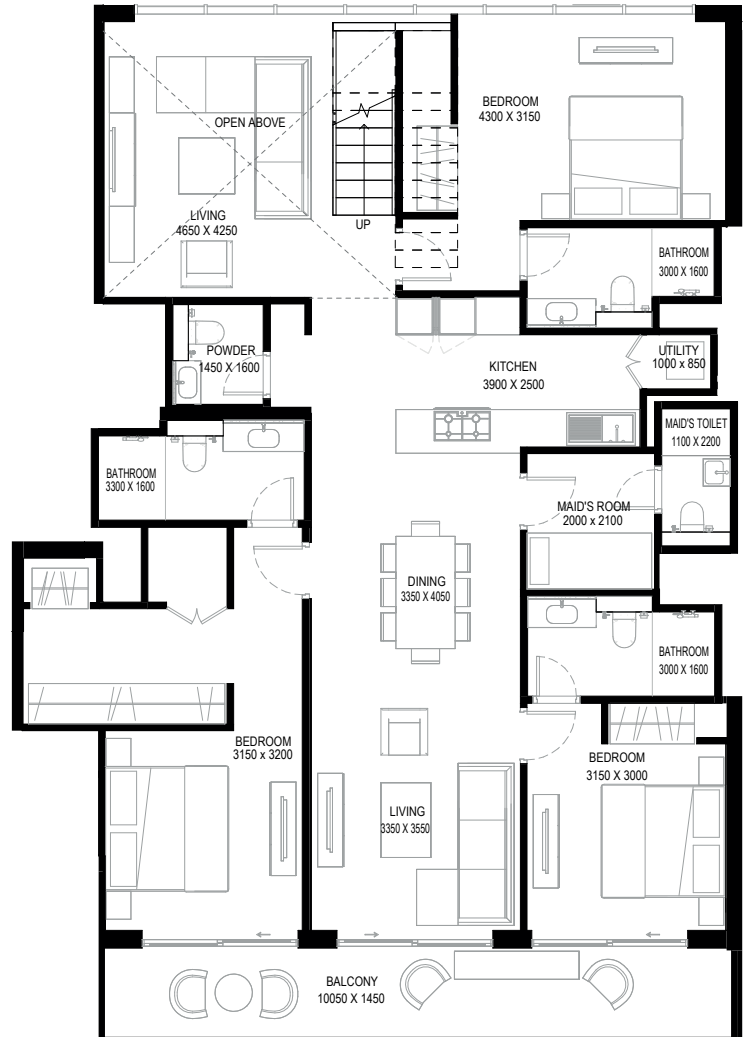
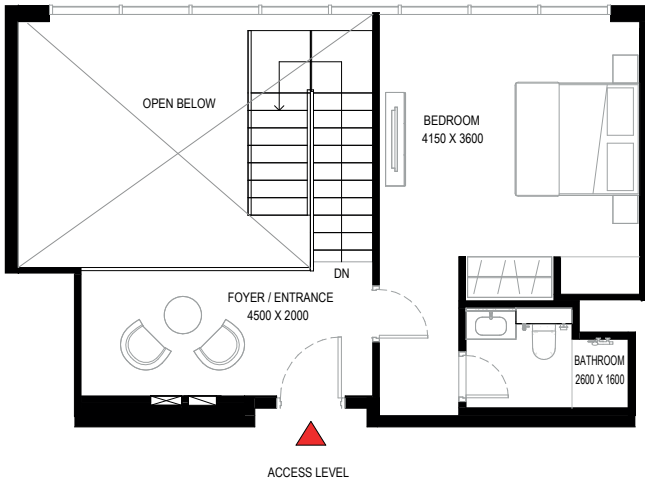
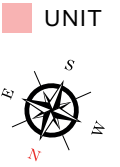
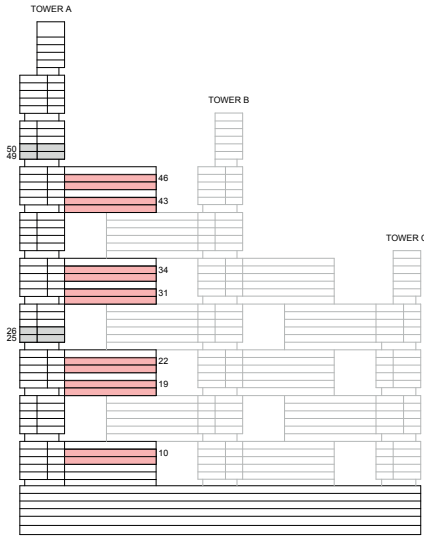
TYPE A1 (with maid room and powder room + balcony)

TOTAL SALEABLE AREA

SUITE = 2,227.74 SQ.FT.

BALCONY = 173.33 SQ.FT.

TOTAL = 2,401.07 SQ.FT.



List of unit numbers with this unit plan:

VIEWS

Ras Al Khor, Golf Course, Amenities
A1017, A1917, A2217

Ras Al Khor, Golf Course
A3117, A3417, A4317, A4617

Disclaimer: 1. All dimensions are in metric, measured to wall finishes. 2. All materials, dimensions & drawings are approximate. 3. Information is subject to change without notice, at developer's absolute discretion. 4. Actual area may vary from the stated area. 5. Drawing are not to scale. 6. All images used are for illustrative purpose only and do not represent the actual size, features, specifications, fittings and furnishings. 7. The developer reserves the right to make revisions/ alterations, at its absolute discretion, without any liability whatsoever.

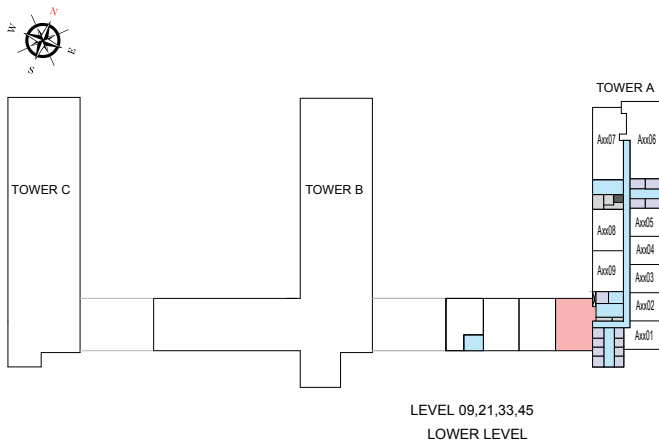
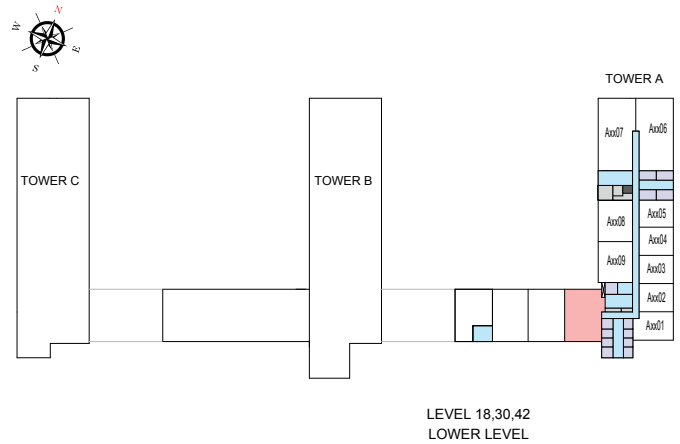
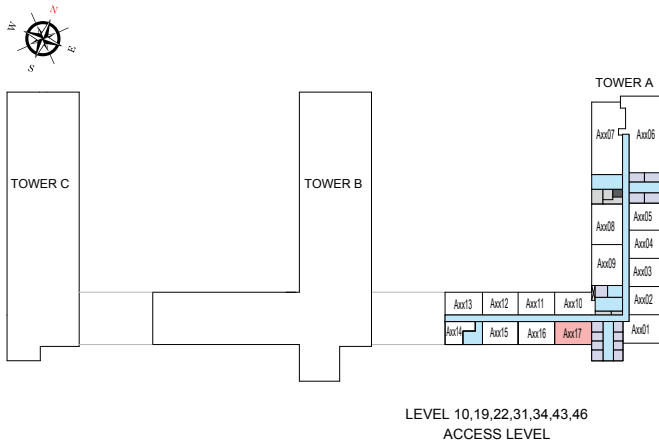
4 BEDROOM DUPLEX APARTMENT

TYPE A1 (with maid room and powder room + balcony)

TOTAL SALEABLE AREA

SUITE = 2,227.74 SQ.FT.
 BALCONY = 173.33 SQ.FT.
 TOTAL = 2,401.07 SQ.FT.

■ UNIT



List of unit numbers with this unit plan:

VIEWS

Ras Al Khor, Golf Course, Amenities
 A1017, A1917, A2217

Ras Al Khor, Golf Course
 A3117, A3417, A4317, A4617

Disclaimer: 1. All dimensions are in metric, measured to wall finishes. 2. All materials, dimensions & drawings are approximate. 3. Information is subject to change without notice, at developer's absolute discretion. 4. Actual area may vary from the stated area. 5. Drawing are not to scale. 6. All images used are for illustrative purpose only and do not represent the actual size, features, specifications, fittings and furnishings. 7. The developer reserves the right to make revisions/ alterations, at its absolute discretion, without any liability whatsoever.



SOBHA ONE

SOBHA
REALTY